



**GREENPEACE**

annual report

2009–2010

[greenpeace.org](http://greenpeace.org)

# GREENPEACE

## Mission Statement

Greenpeace is the leading independent campaigning organization that uses peaceful protest and creative communication to expose global environmental problems and to promote solutions that are essential to a green and peaceful future.

With over 40 offices located throughout the world, Greenpeace works to protect our oceans and ancient forests, and to end toxic pollution, global warming, nuclear threats, and genetic engineering.

Since 1971, Greenpeace has been the leading voice of the environmental movement by taking a stand against powerful political and corporate interests whose policies put the planet at risk.

## Charity Rankings

Greenpeace Fund is consistently ranked among the nation's top charities—for our achievements and for the high percentage of revenue that goes directly towards the protection of the planet.

Greenpeace Fund is proud to meet all of the BBB Wise Giving Alliance Standards for Charity Accountability.

Greenpeace Fund is recognized by Charity Navigator as having demonstrated excellent financial efficiency.

Greenpeace Fund is proud to be a top-rated environmental charity by the American Institute of Philanthropy with an "A-."

Greenpeace Fund is proud to be part of the CFC and to carry the "Best in America" seal from Independent Charities of America. Of the 1,000,000 charities operating in the United States today, it is estimated that fewer than 50,000, or 5 percent, meet or exceed these



## GREENPEACE, INC. 2009–2010 BOARD OF DIRECTORS

Donald K. Ross, Chair  
Elizabeth Gilchrist, Treasurer  
Sharyle Patton  
Valerie Denney  
Dan Rudie  
David Hunter  
Jigar Shah  
David Pellow  
Bryony Schwan

### Additional Officers

Philip D. Radford  
Tom Wetterer, Secretary

## GREENPEACE FUND, INC. 2009–2010 BOARD OF DIRECTORS

David Chatfield, Chair  
Peggy Burks, Treasurer  
Elizabeth Gilchrist  
Ellen McPeake  
Karen Topakian  
John Willis  
Jeffrey Hollender

### Additional Officers

Philip D. Radford  
Daniel McGregor, Secretary





# Contents

- 2** From the Executive Director
- 3** Key Victories of 2009 and 2010
- 4–5** Climate Campaign
- 6–7** Forests Campaign
- 8** Toxics Campaign
- 9** Nuclear Campaign
- 10–11** Oceans Campaign
- 12–13** Whales—35 Years of Challenge, Persistence, and Hope
- 14–15** Global Impact
- 16** Looking Forward 2010–2011
- 17** From the Greenpeace Fund Board of Directors
- 18–19** Financial Statements
- 20–26** Donor Recognition
- 28–29** Greenpeace Worldwide

# From the Executive Director



I am often asked how I stay optimistic about the future when so many challenges confront our planet. The answer is simple: “you.”

You are passionate, principled, optimistic, and persistent. You believe we can conquer the irresponsible and greedy who view our rivers, mountains, oceans, and forests as resources to exploit. You believe we can convince captains of industry and world leaders to take transformative steps to protect our resources, even in the face of the worst kind of propaganda and dirty political tactics. You know it’s possible to make change happen if we stand up and demand the highest level of accountability and leadership.

Just look at what we accomplished together—even when lawmakers and executives failed to take responsibility for the fate of the planet:

- » We forced the world’s largest food and drink company, Nestlé, to commit to protecting one of the most important ancient rainforests in the world in Indonesia’s Paradise Forests, the last place where you can find critically endangered orangutans.
- » We helped Vermonters work to shut down one of the oldest, dirtiest, and most dangerous nuclear power plants in the country. It’s a tremendous start to a nationwide campaign to replace obsolete and polluting power plants with a clean energy infrastructure.
- » We convinced Trader Joe’s to stop selling products made from seafood at risk from overfishing, provide accurate labels for their seafood products, and support the creation of marine reserves. Trader Joe’s now joins several of the largest supermarket chains in the US in advocating for sustainable seafood policies and stronger protections for marine life.

As you read more about our accomplishments over the past year, I hope you take as much pride in these victories as I do, because your support was essential at every stage.

We still have so much more to do. We must end our dependency on fossil fuels and commit to a clean energy future. We must end the destruction of our ancient forests, a critical step in fighting global warming and in protecting endangered wildlife. We must create marine reserves that end overfishing and commercial whaling, once and for all. We must push for greater safety measures for our chemical plants.

We at Greenpeace are nothing if not ambitious. But I am confident that we can achieve these goals because you—and millions like you across the globe—believe that principles and persistence are the ingredients for success.

Thank you for your enduring and unshakable belief that we can lead the way toward a green, peaceful future.

For the Earth,

Phillip D. Radford  
Executive Director

# Key Victories of 2009 and 2010

October 2009

International cattle giants band together to stop deforestation in the Amazon. Within months of Greenpeace releasing a report describing the horrific destruction of the Amazon rainforest to make way for cattle ranches, four of the world's largest cattle traders agreed to stop purchasing cattle raised in newly deforested areas of the rainforest. Traders faced enormous pressure when Adidas, Nike, and Timberland pledged to cancel contracts with them if they continued to purchase cattle from ranches in the Amazon rainforest.



© Ricardo Fumati/ Greenpeace

December 2009

Clorox puts safety first for 13 million Americans. After Greenpeace informed Clorox's CEO of the risk posed to 13 million Americans should seven of the company's bleach factories fall victim to an accident or attack, the company announced that it would no longer use highly volatile chlorine gas at any of its US factories, switching to a safer process for making bleach.



© John Woods/ Greenpeace

January 2010

Target discontinues the sale of farmed salmon. Spurred by Greenpeace's evaluation of the company's seafood procurement policies and with additional information provided by Greenpeace and the Monterey Bay Aquarium on the environmental degradation caused by salmon farms—Target took a leap forward for the entire supermarket industry by taking all products made with farmed salmon off its shelves. Target is the first major retailer to drop farmed salmon from its product line in the name of seafood sustainability.



© Robert Meyers/ Greenpeace

May 2010

Millions across the globe convince Nestlé to end its role in destroying Paradise. Exposed by Greenpeace as a culprit in the destruction of one of the last ancient forests in the world, and shamed by millions of consumers who unleashed their outrage on the company through Facebook and Twitter, Nestlé committed to stop purchasing palm oil from plantations that slash and burn Indonesia's Paradise Forests.



© Simon Lim/ Greenpeace

May 2010

Logging companies, government officials, and environmental groups agree to end logging across more than 110,000 square miles within Canada's boreal forest. After initiating the first comprehensive, collaborative planning effort to save the boreal forest, Greenpeace, native leaders, and other environmental groups negotiated a historic agreement, ending all destructive logging in the threatened woodland caribou's habitat, a piece of forest that is larger than Texas and New Hampshire combined.



© Jiri Rezac/ Greenpeace

June 2010

The Obama administration stands up for whales, derailing an attempt to overturn a 24-year-old ban on commercial whaling. Greenpeace mobilized activists around the world when it learned that President Obama tentatively supported a proposal to overturn the moratorium on whaling that Greenpeace advocated so tirelessly for throughout the seventies and eighties. More than 1.5 million people contacted President Obama, and he eventually reversed his position, strongly advocating for upholding the moratorium at the most recent meeting of the International Whaling Commission.



© Scott Portelli/ Greenpeace

# Global Warming Campaign— No More “Drill, Baby, Drill”

Our leaders have failed us in so many ways in the fight against global warming—from the failure to agree on a binding treaty at last year’s international Climate Summit to the failure to set substantive targets for reducing global warming pollution here in the United States.

And now we know that the failure to put in place a sensible, sustainable, safe, and clean energy policy runs much deeper... to the bottom of the ocean floor.

The folly—and danger—of our current energy path hit home this April when BP’s Deepwater Horizon oil rig exploded in the Gulf of Mexico. Eleven people were killed, and more than 200 million gallons of oil spewed out into ocean waters for more than 100 days—coating marshlands and beaches, smothering countless birds, sea turtles, dolphins, and fish, as well as crippling the fishing industry of the Gulf Coast for years to come.

If only the estimated \$32 billion needed to clean up the Gulf had truly gone to moving BP “beyond petroleum.”

In the immediate aftermath of the catastrophe, Greenpeace took a lead role in educating the public on the impacts of the oil spill. We are now helping scientists to conduct research and analyses on marine life that is absolutely critical to saving the Gulf.

## Rapid Response as the Oil Gushed

Just days after the Deepwater Horizon exploded, Greenpeace was on the scene to make sure the world saw through BP’s attempts to minimize the scope of the disaster.

Two of Greenpeace’s small and swift inflatable boats—the *Billy Greene* and the *Patrick Grech*—brought reporters, scientists, and Greenpeace campaigners out into Gulf waters for an independent assessment of the damage. We took photographs of the oil-soaked coastline, of dying marine animals and birds, and of the liberal use of toxic oil dispersants—in real time—while BP continued to downplay the level of devastation. We collected satellite images of the spread of the oil spill and compiled evidence on BP’s long history of taking unacceptable risks in its search for oil. We fed this information to the media—from *The New York Times* to Fox News and National Public Radio to the Associated Press—providing a complete picture of the disaster.

By exposing the severity of the BP oil spill to the public, Greenpeace has once again “blown the whistle” on negligent behavior and opened the eyes of the public to the truth. We held BP and the federal government accountable to the world and, as a result, both are putting substantial resources toward a recovery effort.

## No More Deep-Sea Drilling

The well at the bottom of the Gulf may be capped, but the tragedy is far from over. Scientists and government officials simply do not know what the long-term ecological impacts of the spill will be. Moreover, BP continues to try to mislead the public about the amount of oil circulating in Gulf waters with the hopes of expanding deep-sea oil extraction across the globe.

That’s why Greenpeace’s ship, the *Arctic Sunrise*, is touring the Gulf for three months (starting in August) with a host of scientists onboard who will be analyzing the impact of the oil and the dispersants, taking samples of plankton, deep-sea corals, and blue crab larvae, and monitoring the health and behavior of marine animals, including sea turtles, dolphins, and whales.

Greenpeace will provide the scientists’ initial findings to the media, and the public at large, as part of a global campaign to stop the expansion of oil exploration, from the Gulf to the Arctic. Just as the *Arctic Sunrise* sails through the Gulf, Greenpeace has sent another ship, the *Esperanza*, to challenge the oil industry to stop dangerous deep-water drilling operations in the Atlantic Ocean.

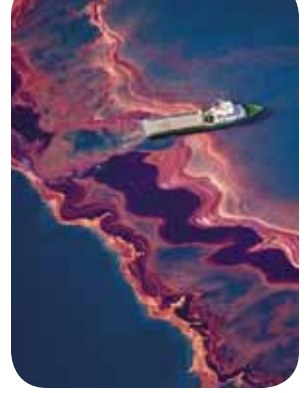


Smoke rises from a controlled burn of oil near BP’s Deepwater Horizon platform.

© Daniel Beltrá / Greenpeace

“We don’t really know what long-term effects the oil spill will have.... However, what we learn here could help confirm the dire effects of our addiction to fossil fuels.”

— Dr. Jose Lopez of Nova Southeastern University, touring Gulf waters with Greenpeace onboard the *Arctic Sunrise*, studying the impacts of the catastrophic BP oil spill on marine life.



© Daniel Beltrá / Greenpeace



© Daniel Beltrá / Greenpeace

A tanker in the area where oil is still discharging from the Deepwater Horizon wellhead. The oil is visible on the sea surface.

Adult brown pelicans wait in a holding pen to be cleaned by volunteers at the Fort Jackson International Bird Rescue Research Center in Buras.



© Marco Okhuizen / Greenpeace

## Kumi Naidoo, Executive Director of Greenpeace International

commenting on the failure of world leaders to come to a binding agreement on cutting global warming pollution at the United Nations Climate Summit in Copenhagen in December 2009.

“ We have seen a year of crises, but today it is clear that the biggest one facing humanity is a leadership crisis.

Climate science says we have only a few years left to make the kind of rapid reductions that would give us the best chance of avoiding dangerous climate change. We cannot change that science, so instead we will have to change the politics.

Civil society now needs to redouble its efforts. Each and every one of us must hold our leaders to account. We must take the struggle to avert climate catastrophe into every level of politics—local, regional, national, and international. We must also take it into the boardroom and onto the streets. We can either work for a fundamental change in our society or we can suffer the consequences. ”

# Forest Campaign— Saving Paradise

Two-thirds of all land-based wildlife depend upon ancient forests for their survival, from unique plants like the rafflesia (the largest flower on earth) to the critically endangered orangutan. Ancient trees, especially those found in tropical forests, are also an essential buffer to global warming, as they store billions of tons of carbon dioxide.

Yet, a network of global corporations has been more than willing to tear down tropical forests to produce and sell a wide range of products—from shoes and handbags to soaps and candy bars.

Such is the plight of the Paradise Forests in Indonesia, where an unscrupulous conglomerate, Sinar Mas, has been slashing and burning thousands of square miles of forest to make way for palm oil plantations. Palm oil is a ubiquitous ingredient found in everything from Dove soap bars to Nestlé Baby Ruths.

Up until recently, huge retail companies, like Unilever and Nestlé, have looked the other way and purchased the palm oil with no questions asked. Well, not anymore. Greenpeace is holding these global corporations accountable, convincing them to make transformative change to the way they do business.

Nestlé is one of the world's largest buyers of palm oil, using it in many of its products, including most of its candy bars. It is also a company notorious for refusing to cooperate with environmental groups. Until now.

## Taking a Bite Out of Nestlé

This year, Greenpeace exposed Nestlé's role in destroying forests with an eye-opening report, "Caught Red-Handed," and harnessed the power of social media sites like YouTube, Facebook, and Twitter to push the company towards reform.

A graphic video spoofing Nestlé's advertising was an Internet sensation with more than a million outraged consumers viewing it and then bombarding the company with demands to stop purchasing palm oil derived from deforested areas in Indonesia.

Greenpeace continued to apply pressure on and offline by staging a protest at the company's annual shareholder meetings and by encouraging activists to send a relentless stream of Facebook and Twitter messages to the company.

In May, the company capitulated, announcing that it would identify and exclude any trader in its supply chain that sells materials, like palm oil, derived from decimated forestlands. Nestlé also gave public support to Greenpeace's call to protect peatland areas in the Paradise Forests and to put an end to all activities that further harm the forest.

Nestlé joins Unilever in ending contracts with companies that produce and trade palm oil originating from devastated areas in the forest. Greenpeace will keep the pressure up on such companies, including Cargill and Sinar Mas, and on the Indonesian government to put an end to the destruction once and for all.



On October 27, 2009 Greenpeace established the Climate Defenders Camp in the heart of Indonesia's Paradise Forests. Created to draw attention to the cost of forest destruction, a large portion of the camp was destroyed by a deliberately set fire in April 2010.



“In just weeks, Greenpeace pushed Nestlé in a direction that no other environmental group has been able to before. The biggest food and drink company in the world has made a 180 degree turn from a company ignoring the problem to one with a new worldwide commitment to protect rainforests.”

— Rolf Skar, Greenpeace Senior Forest Campaigner



© Natalie Behring-Chisholm / Greenpeace

Orangutans are one of mankind's closest biological relatives, sharing 97% of our DNA. Next to humans, orangutans have the longest “childhood” in the animal kingdom. Orangutan young will nurse until they are around six and will stay with their mothers well into their teenage years.



© Natalie Behring / Greenpeace



© Christian Asluna / Greenpeace



© Jeremy Sutton-Hibbert / Greenpeace

# Toxics Campaign— Real Chemical Security Now

“The only foolproof way to safeguard communities from these plants is to use safer chemical processes that eliminate the possibility of a catastrophic accident or attack. Clorox is converting all of their US plants to eliminate the risk. If Clorox can do it, why won't others?”

—Rick Hind, Greenpeace Legislative Director, after two DuPont plants fail a Greenpeace safety inspection.

Nearly ten years after the September 11th attacks, the House of Representatives and one of the country's leading chemical manufacturers are finally taking steps to address the enormous risk associated with chemical plants across the country.

Millions of people are at risk should an accident or attack occur at any one of hundreds of chemical processing plants and water treatment facilities across the country. Since 2001, Greenpeace has advocated for a new law to require the highest risk plants to use less volatile chemicals and put in place strict and comprehensive safety procedures.

We've built a coalition of unions, physicians, county officials, first alert responders, and many others to push for legislation. Such a law has slowly moved through the halls of Congress—with our coalition keeping steady pressure on lawmakers. Until last November, however, a bill had never moved forward for a full vote in either the House or the Senate.

Legislators responded to a variety of pleas from citizens and our coalition, including an online petition and a series of media events in 18 key states where attacks on chemical plants could have a devastating impact on millions of people, and approved the Chemical and Water Security Act of 2009.

Greenpeace has also put pressure on individual chemical companies to clean up their plants. In addition to discussions with company executives, we have issued a series of inspection reports, evaluating the safety of plants across the country. Discussions with Clorox were particularly fruitful, with the company committing in November 2009 to eliminate the security risk for 13 million Americans by phasing out the use of highly unstable chlorine gas at all of their US bleach processing plants.

Chemical giant DuPont has been less cooperative, so Greenpeace has launched a highly public campaign to convince the company to follow Clorox's lead. We conducted an inspection along the Delaware River, where two DuPont plants that use chlorine gas in their processing activities are located. These plants in Delaware and New Jersey put between 600,000 and 2 million people at risk. Greenpeace's aerial inspection was conducted from the *A.E. Bates*, a new 135-foot thermal airship, which flew over these plants with a banner reading, “Real Chemical Security Now!”



The *A.E. Bates* thermal airship, named in honor of the late Mr. A.E. Bates—a volunteer who gave over 25,000 hours of service to Greenpeace US—is the newest addition to the Greenpeace fleet of vessels.

Jim Shafer/ Greenpeace

# Nuclear Campaign— Shutting Down the Oldest and Dirtiest



“I’m no nuclear engineer, just a regular guy, but know that we can’t have Vermont Yankee around any longer.”

— Vermont State Representative Paul Poirier

Greenpeace isn’t waiting for Congress or the president to move forward with an energy revolution. We have to act now to move away from dirty coal plants that spew tons of global warming pollution into the air, but that doesn’t mean shifting to nuclear energy. Nuclear energy creates radioactive waste that, while invisible, lasts for hundreds of thousands of years, and with no current facilities for permanent disposal, is extremely dangerous when leaked into groundwater and soil. As the next transformative step toward a clean energy revolution, Greenpeace is helping communities across the country shut down the oldest, dirtiest nuclear power plants.

We’re celebrating our first big victory this year: the retirement of the Vermont Yankee nuclear power plant in the Green Mountain State. A host of problems plagued this particular plant, from missing fuel rods to the collapse of cooling towers to the uncontrolled and unmonitored releases of radiation into groundwater.

Citizens had a unique opportunity to build a grassroots campaign to shut down the plant, for Vermont is the only state in which the legislature can authorize or deny a plant’s operating license. Entergy Nuclear sought such a renewal as its 40-year license for Vermont Yankee came to an end, but faced fierce opposition from local environmental groups, business leaders, and concerned citizens. Greenpeace provided support to the movement by sending student activists to help organize rallies, gather petitions, and launch letter-writing campaigns in all parts of the state. We also sent the Greenpeace *One World* hot air balloon to several of those rallies to get the attention of reporters and spur state lawmakers to act.

In February, the Vermont State Senate decided to retire the plant by a vote of 26 to 4, and Vermont sent a clear message to President Obama and the nuclear industry: a nuclear “renaissance” is dead on arrival. We must retire these aging plants and replace them with a clean energy infrastructure.



© Andy Duback / Greenpeace



© Andy Duback / Greenpeace

Greenpeace activists stage demonstrations in Vermont, in an effort to shut down one of our nation’s oldest and most dangerous nuclear reactors: Entergy’s Vermont Yankee.

# Oceans Campaign— Transforming the Seafood Marketplace

Irresponsible and destructive commercial fishing practices have devastated the world's fish populations—from pollock to bluefin tuna. Without immediate action to end these practices and to create marine reserves, most of the world's fisheries will collapse in the next 50 years, putting hundreds of marine animals at risk of extinction because they will not have a reliable food source.

Over the past two years, Greenpeace has found an influential ally in the fight to safeguard our oceans—supermarkets. With Americans buying billions of dollars of seafood each year, supermarket chains can be a powerful force in reforming commercial fishing operations.

We've brought supermarket chains, like Whole Foods and Target, onboard by keeping a close eye on procurement and selling practices. We educate consumers on the good and bad actions of these chains with our "Carting Away the Oceans" report, which includes a ranking of all the major supermarket chains that we update as companies improve their policies. We also work with consumers and Greenpeace activists from all over the country to push companies to reform the way they do business in selling seafood and to join us in fighting for marine reserves.



## Tackling Trader Joe's

This year, Trader Joe's changed tack and joined our sustainable seafood campaign. It's a dramatic turnaround for the company, which ranked at the bottom of our report a year ago. At that time, we contacted company executives, who pointedly ignored us.

Their position changed after months of protests in front of Trader Joe's stores from coast to coast, with Greenpeace student activists and consumers demanding that managers remove products made with red-list seafood (those species that are at severe risk as a result of overfishing) from their shelves. Greenpeace also launched an attack on the Trader Joe's brand, using the company's own mascot against it. "Traitor Joe" regularly Tweeted Greenpeace activists about the company's irresponsibility in selling red-list seafood. And at the Traitor Joe's website, consumers got up-to-date information on the red-list seafood that the company was selling, and were given the opportunity to send messages demanding change to the company in creative and amusing ways.

Now, Trader Joe's has committed to take all red-list seafood products off its shelves by 2012, to provide accurate information on labels about the species of fish in products and the method of catch, and to join conservation organizations in supporting the creation of marine reserves.

Greenpeace will continue to monitor Trader Joe's to make sure it lives up to its commitments. We are now working to convince other chains, like Costco, to take similar steps toward selling sustainable seafood.



“After months hearing from activists, shoppers, and pirate pals how important it is that I stop destroying the oceans just to turn a profit, I finally turned over a new barnacle.”

—Greenpeace’s “Traitor Joe,” announcing supermarket chain Trader Joe’s new sustainable seafood policy.



© Gavin Newman/ Greenpeace



© Christian Aslund/ Greenpeace



© Robert Meyers/ Greenpeace



© Alex Hafford/ Greenpeace

Factory trawlers drag enormous nets across the ocean floor to catch fish. Some of these nets are 3,500 feet in circumference at the mouth—large enough to encompass three Statues of Liberty. Due to their size and irresponsible use, commercial fishing nets capture dolphins and sea turtles and destroy coral reefs in pursuit of unsustainable quotas. Greenpeace is campaigning to establish a network of protected marine reserves, which would cover 40% of the world’s oceans.

# Whales— 35 Years of Challenge, Persistence, and Hope

**Thirty-five years ago**—on April 27, 1975—Greenpeace founder Bob Hunter set sail on a tiny boat with Dr. Paul Spong and a brave team of activists to pursue enormous whaling vessels on the Pacific high seas. They set out on these treacherous waters to bear witness to the wholesale slaughter of the world’s most intelligent, social, and splendid creatures—and to stop it.

It was a pivotal moment in the history of environmental activism, when people put themselves in grave danger to bring attention to the plight of the whale, which has come to symbolize the destruction that man can wreak on the entire planet.

**The voyage itself is also an enduring lesson in how important courage and persistence are in any fight for a green, peaceful future.**

It was nearly a month into the trip before the Greenpeace team picked up a radio transmission from a Soviet whaling ship. As they drew close, the sea turned red and the enormous corpses of harpooned sperm whales floated in the choppy water. The Greenpeace crew immediately lowered high-speed inflatable rafts and zoomed towards the Soviet harpoon boat. They chased down the whaling ships and positioned the rafts between the harpoons and the whales.

At one point, a harpoon fired just over Bob Hunter’s head, but the Greenpeace team stayed put. Eventually, the Soviet ships retreated for fear of a scandal. The pictures and video that the Greenpeace crew brought back shocked the world and sparked international outcry.

It would, however, be another 10 years before a ban on the barbaric commercial whale hunt was put in place. Not until 1986, after intense lobbying, did the International Whaling Commission (IWC) pass a moratorium on commercial whaling. As a result, many whale species that were once on the verge of extinction have begun to recover.

However, the fight is not over. A few countries, including Japan, continue to kill whales, using a loophole in the moratorium that allows for “scientific” whaling expeditions. Other countries, like Iceland, ignore the treaty altogether.

This year, forces conspired to lift the more than 20-year moratorium on commercial whaling. Greenpeace made sure that this effort, originally supported by appointed officials in the Obama administration, would not go down quietly.

Due to persistent creative communications, including a delivery of thousands of origami whales and 1.5 million petitions to the White House, and strategic conversations, Greenpeace secured a public statement from the Obama administration rejecting any proposal which would legalize commercial whaling.

Once again, persistence led to success. At the meeting of the IWC in June 2010, Obama administration officials spoke in strong support of the whaling ban and delivered a written statement demanding the end of all commercial whaling and the enforcement of the Southern Ocean Whale Sanctuary.

It’s a long, hard fight, but that’s the nature of our work. In the coming year, Greenpeace will continue to encourage the US to use its diplomatic leverage to turn the IWC from a whale hunting commission to the world’s leading whale conservation body.



© Jeremy Sutton-Hibbert / Greenpeace



© Kate Javison / Greenpeace



“For the first time in the history of whaling, human beings had put their lives on the line for whales.”

—1975 article in *The New York Times*, describing the efforts of Greenpeace to stop Soviet whaling ships from slaughtering sperm whales.

© Paul Hilton/ Greenpeace



© Jiri Rezac/ Greenpeace



© Jiri Rezac/ Greenpeace



© Paul Hilton / Greenpeace



© Scott Portelli/ Greenpeace

# Global Impact

## January

**Argentina.** After years of Greenpeace applying pressure to decision makers and engaging in peaceful protests, the Forest Law to reduce deforestation is now in effect.



© Rodrigo Balélar / Greenpeace

## February

**Nigeria.** Following a three-year undercover investigation, Greenpeace exposed that electronic waste was not being recycled and was being shipped to Nigeria, disguised as second-hand goods. Once there, it was sold, scrapped, or illegally dumped.



© Kristian Buus / Greenpeace

## March

**Belgium.** Three-hundred-and-forty Greenpeace activists were arrested as they took their demand to “Bail out the Planet” to European Union finance ministers. The Greenpeace activists surrounded the building and called on ministers not to come out without money on the table to tackle climate change, rather than to continue dishing out billions of taxpayers’ money for failed banks and carmakers.



© Eric De Milit / Greenpeace

## July

**Brazil.** Nike, Timberland, and Adidas announced a policy agreement with Greenpeace that will help ensure the leather used in the shoe companies’ products will not contribute to new deforestation in the Amazon Rainforest.



© Ricardo Funari / Greenpeace

## August

**Finland.** After seven years of Greenpeace pressure, a government-owned logging company agreed to leave the ancient trees of northern Lapland standing by signing a twenty-year logging moratorium.



© Pim Korver / Greenpeace

## September

**Canada.** Greenpeace activists occupied two conveyor belts used to transfer bitumen from an open pit mine to a processing plant demanding the closure of the tar sands. Tar sands development is the single largest contributor to the increase in climate change in Canada, accounting for 40 million tons of CO2 emissions per year.



© Greenpeace



## April

**Belgium.** The European Parliament supported the recommendations of its environment committee to strictly control timber products sold on the EU market. Greenpeace activists in Italy, the Netherlands, and France have been blocking shipments of illegal timber from reaching port to raise awareness of the issue and to urge the EU to take action.



## May

**Japan.** The Japanese court delivered a series of setbacks to the prosecution of anti-whaling Greenpeace activists (the "Tokyo Two") as a result of the Japanese government's attempts to cover up an embezzlement scandal within the whaling industry. On Monday, September 6, 2010 the Tokyo Two were given a suspended sentence of 3 years.



## June

**United Kingdom.** Greenpeace activists intercepted a coal freighter bound for Kingsnorth power station, raising awareness that the utility company is investing in dirty coal-fired energy.



## October

**United Kingdom.** As government ministers returned from summer break, 55 Greenpeace volunteers scaled the walls of the Houses of Parliament to call for the government to meet the challenge of climate change in the run-up to the Copenhagen climate conference. Once on the roof, they unfurled yellow banners reading "Change the Politics, Save the Climate."



## November

**Indonesia.** Following a Greenpeace protest to prevent Asia Pacific Resources International Holding Limited (APRIL) from destroying forest peatlands in Sumatra, Indonesia's Forest Minister issued an order to temporarily stop the paper giant pending a review of the company's permits.



## December

**Copenhagen.** The eyes of the world turned to Copenhagen for the 2009 U.N. Climate Summit. Greenpeace activists mobilized on the ground in Denmark's capital, and in countries around the globe, demanding that world leaders institute a climate treaty that was fair, ambitious, and legally binding. While the politicians failed to act, Greenpeace activists and allies continue to raise their voices, knowing our very future is at stake.



# Looking Forward 2010–2011

## Global Warming & Energy

The next step to avert the most catastrophic consequences of global warming is to free the US from the clutches of coal.

Next year, Greenpeace will launch a massive grassroots initiative to free our country of its dependence on coal by targeting the oldest and dirtiest coal-fired plants in the US. Greenpeace will train community activists to lead campaigns to shut down these plants once and for all, and press for clean energy solutions, including wind and solar, and other efficiency measures to replace coal.

## Forests

The next step to stop deforestation by 2015 is to stop corrupt companies from slashing and burning the tropical forests of Southeast Asia, the Amazon, and Africa's Congo Basin.

Greenpeace will continue to expose the crimes of companies like Sinar Mas, an Indonesian conglomerate that sells palm oil and paper pulp produced in scorched areas of the Paradise Forests. We will build strong coalitions of socially responsible corporations that can end contracts with traders like Sinar Mas and pressure the governments of Brazil and Indonesia to place indefinite moratoria on the activities that drive deforestation. We will apply the lessons learned in the Amazon and Paradise Forests to prevent such wide-ranging devastation from happening in the Congo Basin, a nearly pristine ancient forest targeted by unscrupulous loggers.

## Oceans

The next step to safeguarding our oceans is securing permanent protection for fragile marine ecosystems at both ends of the world and changing the way seafood is sold in the US.

In 2011, Greenpeace will build alliances among scientists, native communities, and environmental activists to push for permanent protection of both Arctic and Antarctic waters, pristine marine environments under threat from the oil and gas industry, and commercial fishing operations. We will also continue to put pressure on major supermarket chains to remove red-list seafood products from their shelves and to become committed advocates for marine reserves. We won't rest until we have closed the loopholes in the commercial whaling ban and have saved the last great whales from extinction.



© Will Rose/ Greenpeace



© Jolli van Houdt/ Greenpeace



© Nick Cobbing/ Greenpeace

# From the Greenpeace Fund Board of Directors



Greenpeace is committed to the highest standards of excellence and accountability in the pursuit of a green and peaceful future. We are dedicated to innovative and cost-effective approaches to educate and activate the public and to promote environmental solutions, while our strict financial management policies have earned us praise and good rankings from watchdog groups. With this in mind, we thought it important to explain the \$12 million decrease represented in the Change in Net Assets line.

A small percentage of the decrease represents real financial loss, as Greenpeace Fund, Inc., like many organizations, experienced a downturn in our investment portfolio in 2009. However, the lion's share of the decrease represents Greenpeace Fund, Inc.'s support of the global Greenpeace organization, through grants to Stichting Greenpeace Council, which is the entity that coordinates Greenpeace's international efforts. In 2007, Greenpeace Fund, Inc. received a large bequest that increased its net assets. From these net assets, the Board decided to make larger grants in 2009 to Stichting Greenpeace Council.

Grants made by Greenpeace Fund, Inc. to our global efforts provide the organization and its donors the ability to support international campaigns. This is especially important for countries and regions that play a critical role in the global environment and where Greenpeace has a presence, but also where there are considerably less opportunities for fundraising. To read more about a few of our office locations and their local work, please see pages 28–29.

We thank you for your continued support. Please know that we value your dedication and hold ourselves to the highest of standards when it comes to putting your generous contributions to the best use for the planet.

For a Green and Peaceful Future,



David Chatfield  
Board of Directors, Chair  
Greenpeace Fund, Inc.

# GREENPEACE FINANCES

## Greenpeace in the United States

In the United States, Greenpeace fulfills its role in protecting the environment through two corporate entities: Greenpeace, Inc., a nonprofit organization formed under Section 501(c)(4) of the Internal Revenue Code, and Greenpeace Fund, Inc., a nonprofit organization formed under Section 501(c)(3) of the Internal Revenue Code.

Greenpeace, Inc. furthers its mission of protecting the environment through research, advocacy, litigation, and lobbying (direct and grassroots). The organization also bears witness to environmental degradation and takes action to prevent it. Contributions to Greenpeace, Inc. are not tax-deductible.

The mission of Greenpeace Fund, Inc. is to promote and protect the environment through research and public education. Greenpeace Fund, Inc. also makes grants to other nonprofit organizations for activities that are consistent with its mission. Contributions to Greenpeace Fund, Inc. are tax-deductible.

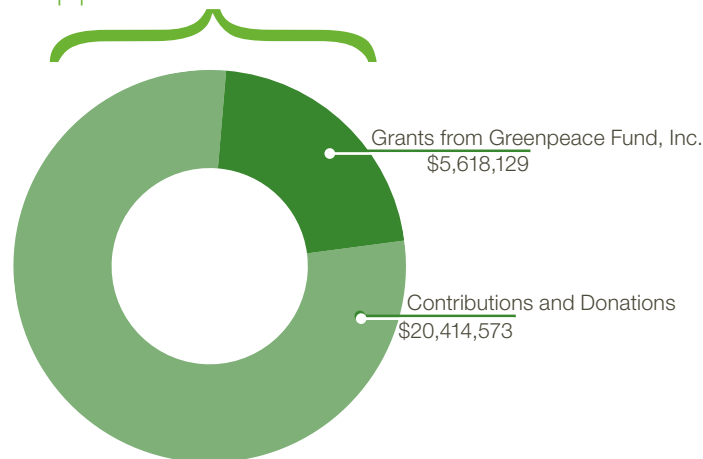
## Greenpeace Independence

To maintain independence, Greenpeace, Inc. and Greenpeace Fund, Inc. do not solicit or accept funds from corporations or from governments. Financial independence is core to our work and one of our greatest strengths. It gives us the ability to take on environmental problems wherever and whenever they occur. This independence is possible because individuals like you are part of a family of more than three million members worldwide.

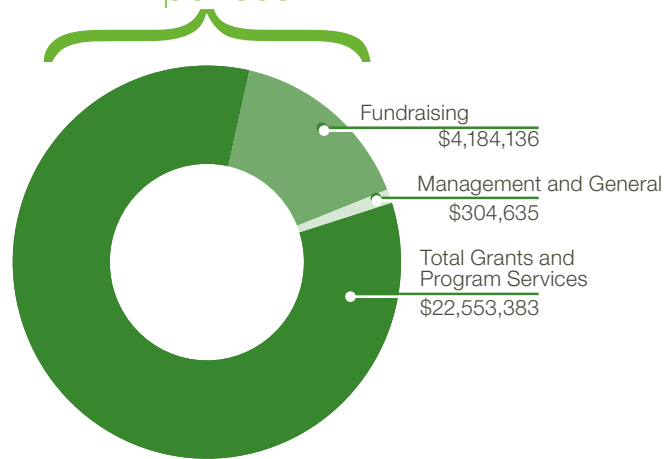
## Greenpeace, Inc. Statement of Activities (year ended December 31, 2009)

	2007	2008	2009
<b>Support and Revenue</b>			
Contributions and Donations	\$15,190,358	\$20,755,850	\$20,414,573
Investment Returns	33,489	-5,611	4,557
Grants from Greenpeace Fund, Inc.	3,401,800	5,003,235	5,618,129
Grants from Stichting Greenpeace Council	800,000	0	0
Licensing, Royalties and Merchandise	39,913	45,185	9,671
Asset Sale	0	7,000	0
Net Assets Released from Restrictions	850,000	175,468	284,532
<b>Total Support and Revenue</b>	<b>20,315,560</b>	<b>25,981,127</b>	<b>26,331,462</b>
<b>Expenses</b>			
<b>Grants and Program Services</b>			
Oceans Campaign	3,659,431	3,541,539	3,689,147
Climate Campaign	3,544,753	5,614,169	3,528,430
Forests Campaign	2,507,719	3,758,169	3,754,711
Action Resources	1,597,603	1,872,541	2,035,530
Outreach Campaign	743,310	1,191,103	3,508,948
Toxics Campaign	1,442,231	2,203,083	2,254,636
Public Information and Education	2,803,586	3,745,924	3,714,418
Other Campaigns	10,724	2,085	67,563
<b>Total Grants and Program Services</b>	<b>16,309,357</b>	<b>21,928,613</b>	<b>22,553,383</b>
<b>Support Services</b>			
Fundraising	3,161,940	4,016,366	4,184,136
Management and General	356,756	311,907	304,635
<b>Total Support Services</b>	<b>3,518,696</b>	<b>4,328,273</b>	<b>4,488,771</b>
<b>Total Expenses</b>	<b>19,828,053</b>	<b>26,256,886</b>	<b>27,042,154</b>
Temporary Restricted Net Assets	-850,000	284,532	-284,532
<b>Change in Net Assets</b>	<b>-362,493</b>	<b>8,773</b>	<b>-995,224</b>
Net Assets (beginning of year)	1,332,747	970,254	979,027
<b>Net Assets (end of year)</b>	<b>970,254</b>	<b>979,027</b>	<b>-16,197</b>

## Support and Revenue



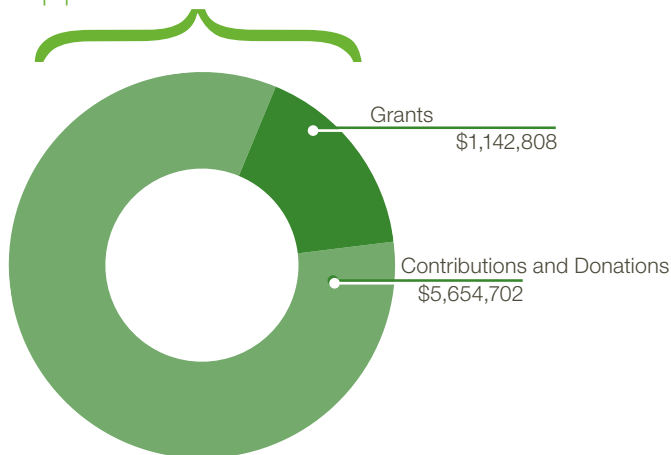
## Expenses



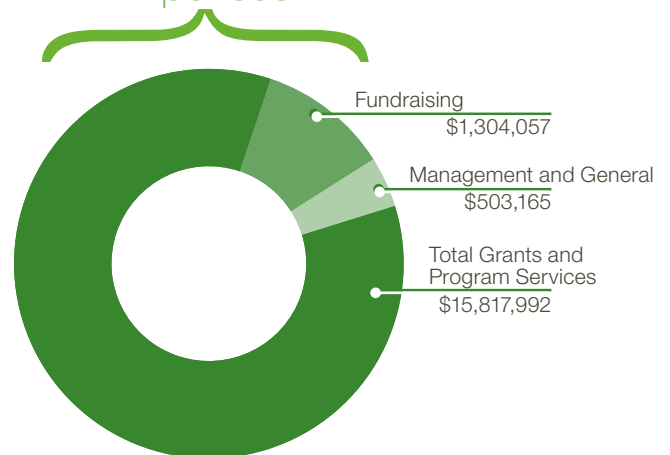
Greenpeace Fund, Inc. Statement of Activities  
(year ended December 31, 2009)

	2007	2008	2009
<b>Support and Revenue</b>			
Contributions and donations	\$8,374,948	\$6,665,444	\$5,654,702
Investment Returns	1,639,393	-7,314,547	-1,821,177
Grants	29,988,374	1,162,573	1,142,808
Asset Sale	0	-29,583	0
Other Income	0	0	2,500
Net Assets Released from Restrictions			205,000
<b>Total Support and Revenue</b>	<b>40,002,715</b>	<b>483,887</b>	<b>5,183,833</b>
<b>Expenses</b>			
<b>Grants and Program Services</b>			
<b>Grants to Stichting Greenpeace Council</b>			
Oceans Campaign	1,621,286	1,399,950	5,045,927
Forests Campaign	317,000	0	519,514
Climate Campaign	1,971,714	2,959,051	4,652,212
Greenpeace China	150,000	0	0
Amazon Work		67,000	0
<b>Total Grants to Stichting Greenpeace Council</b>	<b>4,127,000</b>	<b>4,359,001</b>	<b>10,217,653</b>
<b>Grants to Greenpeace, Inc.</b>			
Oceans Campaign	1,233,500	100,000	700,000
Forests Campaign	308,500	750,000	100,000
Climate Campaign	1,782,800	3,900,000	4,800,000
Leadership		77,000	0
Other	0	613,613	0
<b>Total Grants to Greenpeace Inc.</b>	<b>3,401,800</b>	<b>5,363,613</b>	<b>5,600,000</b>
Grants to Greenpeace Affiliates	15,000	3,000	0
Public Information and Education	30,677	10,481	339
<b>Total Grants and Program Services</b>	<b>7,574,477</b>	<b>9,736,095</b>	<b>15,817,992</b>
<b>Support Services</b>			
Fundraising	1,593,750	1,372,748	1,304,057
Management and General	551,689	543,508	503,165
<b>Total Support Services</b>	<b>2,145,439</b>	<b>1,916,256</b>	<b>1,807,222</b>
<b>Total Expenses</b>	<b>9,719,916</b>	<b>11,652,351</b>	<b>17,625,214</b>
Temporarily Restricted Net Assets	0	355,000	275,000
<b>Change in Net Assets</b>	<b>30,282,799</b>	<b>-10,813,464</b>	<b>-12,166,381</b>
Net Assets (beginning of year)	6,778,935	37,061,734	26,248,270
<b>Net Assets (end of year)</b>	<b>37,061,734</b>	<b>26,248,270</b>	<b>14,081,889</b>

Support and Revenue



Expenses



# Donors

Members and donors give to Greenpeace, Inc. and Greenpeace Fund, Inc. in a multitude of ways at a variety of levels. We are particularly thankful for the steadfast support provided by our Partners in Action who gave \$1,000 or more in **2009** and those individuals who remember us through their bequests and gift annuities. Thank you.

## **\$50,000 +**

Anonymous (5)  
Arcus Foundation  
Gilbert and Ildiko Butler Foundation  
Civil Society Institute  
The Jeremy and Hannelore Grantham Charitable Trust  
The Lara Lee and George Gund III Foundation  
Mr. Douglas Legum  
Marisla Foundation  
The David and Lucile Packard Foundation  
The Partnership Project  
Erik and Terrin Riemer  
Rockefeller Family Fund  
Val and Min-Myn Schaffner  
Waite Family Foundation  
Wallace Global Fund  
Wilburforce Foundation  
Winslow Foundation  
Working Assets

## **\$25,000–\$49,999**

Anonymous (2)  
Ms. Katherine Alden  
Sheila and Francois Brutsch  
Compton Foundation  
John Cecil and Celia Felsher  
Ms. Amy Goldman  
Gilman Ordway  
The Scherman Foundation  
The Tides Foundation  
Tomchin Charitable Family Foundation  
Tortuga Foundation  
Toward Sustainability Foundation  
WestWind Foundation

## **\$10,000–\$24,999**

Anonymous (12)  
Mr. Jay Adler  
David and Jan Blittersdorf  
Mrs. Walter F. Brissenden  
Ms. Meg Cabot  
CGMK Foundation  
Polly and Randy Cherner  
June Clemens  
Robert L. Crowell Charitable Fund  
Ludell Deutscher  
Joseph H. and Barbara I. Ellis  
Mrs. Patricia Forrest  
Ms. Monica Graham  
Collier Hands  
The Herrod Bahamas Foundation  
The Holborn Foundation  
The Jaharis Family Foundation  
Jonathan Kern  
Ms. Karen Kilimnik  
The McIntosh Foundation  
Susanne O. McMillan  
Howard Mechanic  
Mr. Michael Mertens  
Barbara W. Meyer  
Mr. Lawrence S. Meyran  
Stewart R. Mott Charitable Trust  
Mr. Jack Neitz  
Mrs. Eileen K. Nelson  
Ms. Heather Ottem and Ms. Tracie

Brah-Naujeck  
P.E.A.C.E. Awareness Foundation  
Roberts Foundation  
Gay Rogers  
Jozef Ruck and Donna Ito  
Mr. Adam D. Sender  
Shannon Farm Association Inc.  
Patricia J. Simpson  
Ms. Beverly Spector and Mr. Ken Lipson  
Mr. Fred Stanback, Jr.  
John and Carson Taylor  
Linda and Peter Werner

## **\$5,000–\$9,999**

Anonymous (15)  
Peter Altamore  
Ms. Katherine B. Arthaud  
The Banky-LaRocque Foundation  
Dr. David Bassein  
Mr. Chris D. Beyers  
Mr. Hugh Brady  
The Shifting Foundation  
Dr. Irene Brown  
Mrs. Lina G. Chen  
Susan Clark  
Ms. Vera S. Cohen  
Mr. Matt Damon  
Muffy and Andy DiSabatino  
John and Melinda Dittmar  
Mr. Andrew Edlin  
Leo and Sherry Frumkin  
H. Landis Gabel Charitable Lead Trust  
Bradley L. Goldberg Family Foundation  
Adelaide Gomer  
Ms. Sandra R. Hernandez M.D., C.E.O.  
David Higgins and Denise Andriello- Higgins  
Mr. David Husch  
Mr. Kelly Jordan  
John Kay and Jutta Maue-Kay  
Richard Griffin Keiser and R. K. Keiser  
Jenie and Murray Kilgour  
Al Klail and Frances Scott  
Mrs. Katja Knupfer  
E. Marianne Gabel and Don Lateiner  
Ms. Belina Lazzar  
Robert and Judi Lemaire  
Leonard Lepof  
Crea and Phil Lintilhac  
Thomas and Amy Marano  
Ms. Elizabeth Martin  
Mr. Joseph Mayer  
Walter E. D. Miller  
Vijaya Viswanathan and Nagesh Nama  
Justine and Alfred Nathan  
Inma Z. Ortoll  
Larry and Sharon Papike  
Mrs. Charlotte Perret  
Mr. Geoffrey R. Pike  
Victoria Principal  
Mr. Charles Rizzo  
Roxbury Fund  
Harry Schwartz  
Lois and Arthur Stainman  
David and Dianne Stern  
Frances W. Stevenson  
Ms. Gillian M. Teichert  
Tricia and Steve Trainer  
Richard D. Urell  
Mr. Arthur Van Hoff  
Douglas and Leonore Walters  
Ms. Jane Wesman  
Mr. L. Polk Williams, Jr.  
Mr. Ken Wilson  
Stephen Winiarski  
Ms. Patricia Cegann

## **\$2,500–\$5,000**

Anonymous (19)  
Mr. Arnaud Achange  
Mrs. Janet M. Alnwick  
Ms. Sandra Baillie  
Cecile and Christophe Bellito  
Alexander D. Biel  
Jean F. Block Charitable Trust  
Patty and Aaron Blumberg  
David and Ginger Boss  
Lewis Brounell Charitable Trust  
Calvert Giving Fund  
Ms. Virginia Campana  
Dr. and Mrs. William J. Canady  
John E. Cheim and Howard Read  
Malinda and Yvon Chouinard  
Ms. Karen K. Christensen  
Ms. Clara G. Cist  
Mr. Todd Daum  
Lee W. Doan  
Genevieve L. Duncan  
Pamela S. Epple and Paul W. Persons  
Charlotte and Daniel Eth  
Ms. Josephine A. Farwell  
Ms. Joan FitzGerald  
Douglas Friend  
Jennifer Fritz  
Ms. Ute D. Gannett  
Joe Gaul  
Mr. and Mrs. Shawn Goldak  
Barbara Grodd  
Mr and Mrs. Craig Grube  
Ms. Karen Gupta  
Todd Gutmann and Gabriella Laszlo  
Roger A. and Lois S. Hager  
Hamel Family Foundation  
Ms. Carly Hare  
Mr. Peter Hero  
Anita Hirsh  
Mr. Rick Hoffer  
Patrick and Christi Horan  
Hot Mama's Food  
Mr. James D. Hutcherson  
Mr. Steven N. Jacobson  
Amy Larkin  
Ms. Carol Lassen  
Susan Lazarus  
Ms. Arden Lee  
LeFort-Martin Fund  
Saul D. Levy Foundation  
Mr. William Ed Lewis  
The Thalia And George Liberatos Foundation  
Deborah Lynch  
Donald and Bonnie Maharam Charitable Foundation  
Melody and Chris Malachowsky  
Mrs. Jacqueline B. Mars  
Crozer W. Martin  
Ms. Shirley McLaughlin  
Dr. John Moody  
Jewel Moore  
Lois S. Moore  
John and Shirley Nash  
Gillian and Peter Neumeier  
Alisa E. O'Leary  
Ken Olum  
Antoine Predock  
Mr. Don B. Quinn  
Adam J. Richter Charitable Trust  
David and Barbara Roby  
Paul and Catherine Rosenberger  
Myron Rosenthal  
Benjamin J. Rosenthal Foundation  
Rothman Family Foundation  
George and Carol Sabochick  
Ms. Leslie Sauer  
Ms. Margaret E. Saunders  
The Jack Schenker Charitable Trust  
The Seattle Foundation  
Mr. William Shatner and Mrs. Elizabeth Shatner  
Mary Jane Sorrentino and R.J. Stahl  
Ms. Eugenie Sotiropoulos-Foss  
Mr. Maurice Spidell  
Dr. and Mrs. Stephen Stein  
Karen Steingraber  
Ms. Sally Swimmer  
Clare Eddy Thaw  
Mona Todd and Don Geddes  
Mr. Christopher D. Tower  
Jaqueline Van Der Hout  
Mr. Nicolaas Vanderkloot  
Mr. James Vecchione  
David Wallack  
Mr. Adam Weissman  
Mr. Eugene D. Weymouth  
William B. Wiener, Jr. Foundation  
Dr. Robert Williamson and Ms. Patti Dreier  
Mr. Ken Wilson  
Mr. Chris E. Wollstein  
Ms. Shu J. Wong  
Ms. Amy Woods

## **\$1,000–\$2,499**

Anonymous (60)  
Mr. Charles Abela  
Jayne and Leonard Abess  
Emmanuel Ackerman  
Mr. Daniel Adams  
Julie Adelson  
Janet W. Allen  
Ms. Mariette P. Allen  
Penny Fertel Altman  
Geraldine Alvarez  
Mr. Stephen B. Andrus  
Ruth Aponte  
Mr. George N. Appell  
Mr. Luis I. Arce  
Ms. Karen Arce  
Ms. Rowena Archibald  
Mr. Philip Ardery  
Mr. Michael W. Arlen  
Mr. Thomas H. Arms

Louise A. Armstrong  
 Joan and Robert Arnow  
 Arntz Family Foundation  
 Ms. Jacqueline Asplundh  
 J. P. Augustyn  
 Mrs. Gretchen Augustyn  
 Meredith and David Babbott  
 Peter Bacchetti  
 Jennifer Badde-Graves  
 Geoffrey Baldwin  
 Mary and John Baley  
 Judith Bright Barnett  
 Ms. Gale Bartle  
 Bassett Foundation  
 Ms. Maxine Beige  
 Josephine and George Benedek  
 Jeffrey Benedick and Duane Vajgrt, MD  
 Ms. Norma Z. Bennett  
 Mrs. Ronit Benshoshan  
 Mr. Richard Bergmann  
 Ms. Margaret Bergquist  
 Ms. Barbara B. Berman  
 Murray and Ellana Berrie  
 Jutta and Hans Bertram-Nothnagel  
 Ms. Jeanne M. Berwind  
 Miss Jaki Beshur  
 Ms. Amrita Bhandari  
 Mr. Andrew R. Biagioni  
 Big Blue Sky Foundation  
 William and Jane Blake  
 James Blanc  
 Ms. Sharon Blanchet  
 Ms. Dolores Boogdanian  
 Ms. Louise Bourgeois  
 Jeff Boutel  
 William and Elsa Boyce  
 Barbara and John Boyle  
 Mr. Daniel G. Bradley  
 Mr. John A. K. Bradley  
 Nancy Braus and Rich Geidel  
 Mr. Shaun Breidbart  
 Kate A. Brewster-Duffy  
 James G. Briggs  
 Mr. and Mrs. Allen Broadman  
 Joanne E. Broadwell  
 Peter and Alice Broner  
 Cynthia and Adam Bronfman  
 Dr. Olive J. Brose  
 Katie and Bruce Brown  
 Mr. and Mrs. Allan Brown  
 Michael and Geraldine Buckles  
 Ms. Linda L. Bukowski  
 Lyn Burke  
 Dr. Larry Burris and Dr. Kathryn Florio  
 Dr. Richard G. Busse  
 Mr. David Buxton  
 Mr. Thomas S. Campbell  
 C.A. Candon  
 Mr. Gerald Cannon  
 Ms. Renee Capouya  
 Martin and Esther Capp Family Fund of  
 St. Paul Fdn  
 Mr. Thomas J. Carlino  
 Mr. Lawrence B. Carroll  
 Mr. John Caruso  
 Dr. Margaret A. Carver  
 Clarann and Dennis Casciato  
 Mr. Marco Casella  
 Jeff Castelaz  
 Mr. David I. Caulkins  
 Christine Marshall and John Cawley  
 Glen Ceiley  
 Ruth Charnes and David Hansen  
 Ms. Mary Jo Cheshire  
 Mr. Lawrence Chiu  
 Abigail and Lynn Christiansen  
 L.S. Christodoulopoulos  
 David and Susan Clark  
 Sharon Clark, DMD and Adrian Van Bakel,  
 MD, PhD  
 Drs. Charli and Rich Clark  
 The Clarke Family  
 J. A. Clayman, M.D.  
 Mr. Mitch Clearfield and Dr. Melissa  
 Clearfield  
 Stanley G. Coates  
 Naomi and Harvey Cohen  
 Ms. Rosemary E. Coluccio  
 Common Cents Penny Harvest  
 Conservest  
 Janet Corpus and John Hoffmeyer  
 Mr. Kevin S. Costanza  
 Mr. Charles Q. Couch  
 Wendell L. Covalt  
 Kathleen Cover  
 Thomas Crane and Susan Shaw  
 Richard and Elise Creswell  
 Mr. Gregory A. Crockett  
 Mr. Paul P. Cronin  
 Ms. Mary Cummins  
 Betty Jean Curran  
 Mr. Joseph Curtin  
 Carmen and Ludwig Czeisler  
 Ms. Shadi Daneshrad  
 Boston Foundation  
 Karen L. Davis  
 Mrs. Thomas G. Davis  
 Peter J. Davis  
 Ms. Toni M. Davison  
 Elin Satory De Hoyos, MD  
 Mr. Brian J. Decamp  
 Mr. Russell N. DeJong, M.D.  
 Mr. Robert Denenberg  
 John Denham  
 Raj and Helen Desai  
 Robert and Kathy Deutsch  
 Matthias Dietrich  
 Steven Dildarian  
 Erika Diller  
 Barbara Divver and Theodore Reff  
 Rob Docters  
 Ms. Leona Doherty  
 Stephen R. Donaldson and Jennifer  
 Dunstan  
 Karen Donaway  
 Ms. Marjory M. Donn  
 Doug Phelps  
 Mr. Christopher Dowling  
 Mr. R.H. Rackstraw Downes  
 Mr. Tom D. Downey  
 Ms. Robin Dressler  
 Ms. Alexandra Dunaif  
 Andrew Duncan  
 Kellen J. Dunlap  
 Lee Duran  
 Mr. Peter D. Durst  
 Ms. Mary Eagan  
 Robert Eagle  
 Jeb Eddy  
 Mr. Noel D. Eichhorn  
 Ms. Bibi Eng  
 Ms. Sally Englehard Pingree  
 Leslie C. Englehart  
 Ms. Gale Epstein  
 Ms. Edith Everett  
 Ms. Ellen Farbstein  
 Dr. Paul S. Farley  
 Richard Ferrie  
 Jim Fish  
 Ms. Mary Fisher  
 Dr. Mitra Fiuzat  
 Mrs. Amity Flores  
 Gunther Fonken and Agnes Hughes  
 James W. Fraser  
 Daniel French and Rosann Tung  
 David and Judy French  
 Michael and Elaine Fresco  
 Richard and Barbara Friedenber  
 Sam and Esther Friedman Foundation  
 Mr. and Mrs. Philippa Friedrich  
 Mr. David Frierman  
 Joseph Fritz-Mauer and Jossi Fritz-Mauer  
 Mrs. Jory Froggatt  
 Mr. Mack Fuhrer  
 Caroline D. Gabel  
 Ms. Shirlee B. Gabriel  
 Ms. Marie L. Gaillard  
 David E. Gamper  
 Dr. Syamack Ganjavian  
 Mr. Robert Garland  
 Mr. George B. Geary  
 Mrs. Berta A. Gehry  
 Mr. Robert Gendler  
 Drs. Caruille and Pierre George  
 N. Richard and Monique Gershon  
 Ms. Linda Gibboney  
 Dr. Ian Gibling  
 Jordan and Stacey Gillman  
 Martin and Enid Gleich  
 Ms. Jennifer Glick  
 The Glickenhau Foundation  
 Mr. Raymond Goetz  
 Mrs. Diane Golan  
 Andrew Golden  
 Peter A. Goldenring  
 Ken and Paula Goldman  
 Mr. Peter F. Goldscheider  
 Mr. Walter Goldschmidt, Ph.D.  
 Joan and Frank Goodman  
 Mr. Michael A. Gordon  
 Terry Ellen Grant  
 Eve and Tony Green  
 Ms. Andrea Green  
 Moe Greendale Family Foundation  
 Mr. Charles Greene  
 Ms. Elizabeth M. Gregory  
 Ms. Lulu Grodzins  
 Karthika and Anuj Gupta  
 Eleanor Wisner Gural  
 Mr. Duncan Haas  
 Robert Hallowell  
 Elise Zuercher  
 Ken and Jan Harper  
 Ms. Shirley R. Harrington  
 Mr. and Mrs. Burt Harris  
 Scott Harris  
 Marian O. Hasson  
 Mr. Edward Hastreiter  
 Ms. Elizabeth Haught  
 Scott M. Hendler  
 Ms. Jane B. Henry  
 Ms. Barbara Herbst  
 Mr. Michael Hershey  
 S Heyvaert  
 Joe Higdon and Ellen Sudow  
 Ms. Barbara Hildreth  
 Mr. Richard H. Hill  
 Dorothy Hines  
 Pam and Steve Hirsch  
 Susan and Eric Hirst  
 Mr. Edward E. Hinstead  
 Mr. Nicholas Hodges  
 Ms. Arlene Hoffer  
 Lois and Donald Hoffman  
 Ms. Margaret A. Hogan  
 Ms. Evan Claire Hoogs  
 Mr. and Mrs. Dennis Hopkins  
 Ms. Melanie C. Hopp  
 Chris Hornig and Nancy Garruba  
 Lola Lloyd Horwitz  
 Connie and John Rakoske  
 William and Susan Hutras  
 Ms. Ruby Iantosca  
 Ellin M. Irwin  
 Isis Foundation  
 Ms. Margaret Jacobs  
 Jarvey-McCord Foundation  
 Michael Jenkins and Christi Hogin  
 Robert Jennings, Jr. and Barbara Bott  
 Mary and Grady Jeter  
 Jewish Federation of Greater Seattle  
 Mr. Eric S. Johnson  
 Thomas and Elisabeth Jones  
 Jerry and Kristine Jordan  
 Prof. Judy M. Judd  
 Mark and Belinda Kachlein  
 J.W. Kaempfer  
 Mr. Nathan Kahane  
 Ellen Kampinsky  
 Ms. Roberta Kaplan  
 Selma Breskin Kaplan Foundation  
 Janey and Kevin Kasterr  
 Richard Katz, M.D. and Stacey Smith,  
 M.D.  
 Alison Keeler Carrillo  
 Mr. Robert Keisling  
 Caroline Kellen  
 Ms. Aine Kelly  
 Ms. Jacqueline Kelly  
 Mr. Horace Kenney  
 Rolfe Kent  
 Phyllis and Robert Kerdasha  
 Mr. Ashish Kilam  
 Earl Killian and Waidy Lee  
 Mr. Craig H. Kintner  
 David and Jane Kirkpatrick  
 David Life  
 Ms. Lenore Kirvay  
 Mallikarjuna S. Kishtagoni  
 Nancy Kittle  
 Ms. Josephine Klein  
 Ms. Sheri L. Kleist  
 Mrs. Donna J. Klipstein  
 Mr. Jeff Knight  
 Bill Koopunan  
 Ms. Eleanor M. Kowalczyk  
 Nancy Kracht  
 Mr. and Ms. Caleb Kramer  
 Mr. David Kramer  
 Sara Krebsbach  
 Mr. Charles W. Krout, Jr.  
 Mr. Robert L. Kuehlthau  
 Mr. Thomas S. Kusbel  
 Dolores and John Kusmiersky  
 Mr. James Kwiecinski  
 Angela and Carl Lamy  
 Dr. Diane F. Lapham, M.D.  
 Ms. Laura Lau  
 Ms. Shirley L. Laviolette  
 Ms. Marta J. Lawrence  
 Mr. Eugene Lee  
 Mr. Jonathan Lee  
 Mr. Marvin H. Leibowitz  
 Mr. William Lenz  
 Leslie Family Foundation  
 Rene Letendre

Russell Leuthold  
Leon and Catherine Levy  
Ms. Mary L. Lewis  
Toby Devan Lewis  
Mr. and Mrs. Jay S. Lewkowitz  
Mr. Richard L. Lightman  
Ms. Julie Lisle  
Malia and David Litman  
Ms. Jessica Liu  
Mr. and Mrs. Robert W. Lonon, Jr.  
Ms. H E. Luke  
Ms. Diane L. Madigan  
Mrs. Chelsea Madison  
Ms. Mayumi Maeda  
Frances and David Magee  
Brian and Florence Mahony Fund  
Ian Mallace and Valerie Mallace  
Mrs. Claudia Maloney  
Nora A. Maloney  
Dr. and Mrs. Joseph Mann  
Sarah Manno  
Nancy and Alan Manocherian  
Elizabeth Marcellino  
Sole Marittimi and Nick Riley  
Julie Mark  
Ms. J. E. Martin  
Robert Martin and Carol Thrane  
Henrietta and Wallace Martindale  
Ms. Linda Mason  
The John P. McBride Family and The ABC Foundation  
Ms. Angel McConnell  
Norene and William McEntire  
Penelope and Thomas Mcginnis  
Ms. Laurie McGrath  
Ms. Patricia McKee  
The Howard and Kennon Mckee Charitable Fund  
Mr. Allan Mckelvie  
Mr. Gregory McLagan  
Ms. Bonnie McMillian  
Ms. Michele R. McNellis  
Ellen H. McPeake  
Mr. Chandresh Mehta  
Ms. Dina Merrill  
Thomas and Judith Mich  
Mr. Lindsay M. Mickles  
LeRoy and Sharon Mielke  
Anne K. Miller  
Kate and Jack Mills  
Mr. Peter J. Mindock  
L. David Mirkin, M.D.  
Heidi and Howard Mitnick  
The Mitzvah Foundation  
James and Andrea Modney  
James Moore  
Ms. Jill Moore  
Myfe Moore  
Frank Moran  
James Morgenstern and Linda Dow  
Sharon and Jeff Morris  
Mrs. Ranney H. Moss  
Sam and Jeanne Mudd  
Ursula Muehlechner  
Jack Murphy  
Ms. Diane Murray  
Mr. Robert J. Myers  
Mr. Jeremy Nathans  
Natural Gourmet Institute  
Ms. Cassandra Naylor  
Mr. and Mrs. Sarkis Nazarian  
Dorothy and Mark Nelkin Charitable Fund  
Mr. Richard J. Nelson  
Ms. Kate Nesbit

New York University Department of Biology  
Jerry Nickelsburg  
Mr. and Mrs. Michael Nimkoff  
Ruprecht and Biss Nitschke  
Mr. Peter Novick  
Mr. Simon Nynens  
Mr. and Mrs. Tim O'Connell  
John R. O'Laughlin  
Ms. Kathleen O'Leary  
Ms. Cindra Opalsky  
The Oregon Community Foundation  
Judy Orich  
Ms. Andrea Orozco  
Ms. Linda Oster  
Patricia L. Palmer  
Mr. and Mrs. Joaquim Panozzo  
Paradigm Winery  
Mr. and Mrs. Robert Pardo  
Ms. Barbara C. Parkening  
Mary and Dale Parker  
Asha and Arun Patel  
Ms. Mena Paton  
Mr. Michael Y. Payan  
Ann E. Payson and Robert Ulin  
Mr. Dennis Pence  
Mr. Alan Penczek  
Ms. Theresa Perenich  
Mr. Philip K. Perlman  
Karen W. Petak D.V.M.  
Martha and Samuel Peterson  
Ms. Joanne Pittman  
Adrienne Plotch and Robert Feldman  
Ms. Lisa Pope  
Ms. Susanna M. Porte  
Ms. Amanda Porter  
Mrs. Helen Posey  
Ms. Julia E. Powell  
Mr. Thomas Queeney  
Maggie D. Quigley  
Mr. Federico Rampini  
Lyle Ramshaw  
Mr. Cory B. Redding, Sr.  
Dr. Paul Rehkopf and Joey Miller  
Julie Reich  
John Reilly and April Reilly  
Ms. Debbie Rennels  
Mr. Judith F. Rhodes  
Ms. Eleanore Richards  
Brenda Richardson  
Mr. Howard S. Richmond  
Curt A. Ries  
Mr. D Rigney  
Rod and Sherry Rinell  
Ms. Karen Ringsred  
Frank and Joan Ritchey  
Kip and Gina Robbins Fund  
Prof. Joe Roberts  
Richard Rockefeller and Nancy Anderson  
John Rodgers  
Sonia Rodriguez  
Harry E. Roeder  
Deby Rogers  
Mr. Henk B. Rogers  
Ms. Nikky Rolfe  
Mr. Paul Rolke  
Mr. John W. Rose  
Mr. Donald K. Ross  
James Roth  
Edward Rothenberg and Lois Ellison  
Mr. Ben Rowland  
Jeanne and Dick Roy  
Sharon and Kirk Rue  
Ed Ruscha

Gaile and Wilbur Russ  
Mr. Sean Russell  
Mr. William Ryall  
Ms. Mary A. Rybacki  
Mr. and Mrs. Stephen B. Rycroft  
Ms. Roberta Sage  
Mr. James P. Samis  
Mr. Ervin Sauer  
Isabela L. Scarpa  
Werner Schaefer  
Ms. Molly K. Schardt  
Nancy L. Schmanski  
Mr. Elliot Scherker  
Paul and Joan Schoenfeld  
Mr. and Mrs. Tom Schulman  
Ms. Allison Schulnik  
Mr. and Mrs. Robert F. Schumann  
Susan and Ford Schumann  
Bruce and Sher Schwartz  
Eleanor Nadler Schwartz  
Marla Schwartz and Arnold Schwartz  
Mr. Michael Schwarz  
Marilyn L. Schweitzer  
T M Scruggs  
Ms. M. Beth Searls  
Phil Seiden  
Mr. Kenneth Sellin  
Mark and Merle Serlin  
Mr. Rick Sherlund  
Mr. Jeffrey Sherman  
Carol Sibbrell  
Arthur F. and Carol Silbergeld  
Mr. Douglas H. Sills  
Eva and Robert Silver  
Amy and Adam Simon  
Mr. Bedi Singh  
Mr. William R. Sirois  
Gouri and Murali Sivaraman  
Ms. Doris Skopp  
Ms. Samantha Skove  
James Smith  
Mabelle Jean Smith  
Mr. and Mrs. Dale Smith  
Ms. Rebecca Smith  
Ms. Janet Snowden  
Mr. Orin Snyder  
Vivian Sodini and James Haughton  
Camille and James Spar  
John and Marcella Specce  
Ms. Katrin Spiess  
Rezso Springer  
Mr. William E. Stanley  
Marc R. Steinberg  
Ms. Harriet Stern  
Mike Stoller and Corky Hale Stoller  
Mr. James L. Stolz  
Mr. Daniel Stone  
Janina Levy and James Strait  
Dr. Heather Strange  
Stronach-Buschel Fund  
Faith Strong  
Yvette Subramanian  
Joan Summers and Terry Koniarski  
Ms. Valerie H. Swales  
Lynn and Alan Swanson  
Mr. Nick Swardson  
Ms. Julia Taberman  
The David G Taft Foundation  
Mr. David Tapscott  
Ms. Margaretta Taylor  
Ms. Cindy Taylor-Lisenby  
Temcov Foundation  
Mr. Marvin Tenberg  
Atul and Kalpana Thakkar

Barbara A. Thompson  
Kristin Thompson  
Mr. Patrick A. Thompson  
Dr. Christine Tierney  
Monica Timpe and Jeffrey Godfrey  
Emil L. Tobler  
Ms. Irene Trautman  
Dr. Betty M. Twarog  
Mr. Dwayne Ulloa  
Unite The United  
Kenneth and Mary Unkeles  
Ahmad Usmani  
Ms. Elsie P. van Buren  
Miss Issa Van Dyk  
Ruth Van Horn  
Nancy and David Vernoooy  
Linda Vincent and David Collins  
Mr. Milton Viorst  
Jim and Ginger Visconti  
Mr. Larry Von C. Kuster  
Mr. Robert Walker  
Ms. Naima K. Walker Fierce  
Johanette Wallerstein Institute  
Mr. Daniel Wang  
Ms. Joan M. Warburg  
Mr. John Ward  
E. T. Warren, M.D.  
Mr. Gavin Watson  
Ms. Elizabeth F. Watts  
Mr. James C. Waugh  
Susan F. Weber  
Mr. and Mrs. Robert Weil  
Alan Weiner and Nancy Maizels  
Ms. Suzanne Weinheimer  
Paul Weissman  
Ms. Gabrielle Wellman  
Dr. Sharen Westin  
Ms. Pamela Weston  
The Whittle Family Charitable Lead Trust  
Mr. David R. Wiemer, D.M.D.  
Elizabeth Workman and Mark Williams  
Ms. Leslie Williams  
Ms. Ruth Williams  
Ms. Linda Willits  
Winky Foundation  
Margaret M. Winslow  
Ms. Cornelia T. Winthrop  
Lucy Winton  
Mr. Jerry Wiseman  
Ms. Janet C. Woodward  
Mrs. Helene B. Young  
Ms. E. M. Young  
Neil and Pegi Young  
Mr. Peter D. Zeughauer  
Ms. Lion Robin C. Zust

### Planned Giving Donors

Anonymous (86)  
Ms. Suzanne A'Becket  
Mr. Alan R. Abrams  
Diana Abrashkin  
Henry Adamowicz  
Mr. Rodney J. Addison  
Ms. Ethel Adler  
Thomas E. and Sandra M. Ahlstrom  
Ms. Martha Ainsworth  
Mr. John S. Alexander  
Ms. Katherine G. Alexander  
Ms. Mary Allen  
Dr. Julie Ann Allender  
Nancy Allerston  
Ms. Mariah Almonte  
Mr. and Mrs. Vittorio Amadei  
Edward and Pamela Ames



Ms. Norma Amigo  
Mr. William C. Amman  
Mr. Ralph A. Anavy  
Bud and Jackie Anderson  
Mr. and Mrs. Andrew T. Anderson  
Ms. Erika R. Anderson  
Julia A. Antoine, M.D.  
Ms. Miriam L. Appleby  
Mr. Ralph Arbus  
Ms. Mary Armstrong  
John ("Chimo") and Diane Arnold  
Ms. C. Arrison  
Mrs. Adelle Arva  
Miriam Asher  
Mrs. Gilbert H. Ashton  
Ms. Katherine Aspinall  
Mrs. Jane Axel  
Ms. Janet Aylward  
Arthur and Shirley Babad  
Mr. Albert Baca and Ms. Joan Baca  
Ms. Nancy Bacal  
Serge Baghoumian  
Mr. Howard K. Bagley  
Tanya Baikow-Smith  
Dee Baker  
Jan Baker  
Mr. Roger A. Baker  
Ms. Katherine Baker  
Harlow G. Ballard  
Mr. and Mrs. David Bao  
Mrs. Gin Barbarullo  
Dr. Carol K. Bard  
Dr. Janet Barnard  
Ms. Linda Barnello  
Robert G. and Ann S. Barrett  
Mrs. Ann R. Barrows  
Ms. Teresa A. Bassett  
Mr. Kenneth R. Bates  
Ms. Roberta Bauer  
Kurt and Joan Bauereiss  
Ms. Virginia Bayliss  
Ms. Lillian Beach  
Helen Beale  
Ms. Margaret Beals  
Mr. Frederick Beckman  
Mr. Gerhard Bedding  
Prof. Hans-Joachim Behm  
Ms. Mary J. Belfie  
Ms. Adele B. Lumb  
Ms. Adele Bender  
Mr. J.C. Bennett  
Ms. Violet Benoit  
Mr. John E. Benson and Ms. Leita  
Kingsland  
Mr. Philip L. Bereano  
Lane Berk  
Mr. and Mrs. Irv Berlin  
Mr. George J. Berlinski  
Judy and Dennis Berman  
Ms. Zina Berman  
Mr. and Mrs. Adolph C. Bernhardt III  
Howard Bernstein  
Ms. Gladys S. Berry  
Mr. Stephen A. Bessone  
Mr. Michael J. Bihn  
Mr. James R. Bila  
Ms. Bernice Bildner  
Mr. and Mrs. Acar Z. Bill  
Mr. John M. Bissell  
Mr. and Mrs. Richard S. Black  
Steve Blanich and Jo Blanich  
Dr. Mary H. Blewett  
Ms. Muriel Block  
Mr. Brian Blumberg

Ms. Kathleen N. Blumenthal  
Ms. Marilyn Blunt  
Mr. Henry Bodzin  
Ms. Sigrid Boehm  
Mr. Jerry Boehme  
Mr. Stanley O. Bokelmann  
Ms. Nancy M. Bolce  
Ms. Nona R. Bolin  
Ms. Liza Bonilla  
Stephen F. Booth  
Mrs. Joan M. Borousk  
Ms. W. L. Boucher  
Ms. Paula Bowker  
Ms. Marion D. Bowler  
Bernadine Boysen  
Renate Bradley  
Mr. and Mrs. Kenneth W. Bradshaw  
Mr. Wayne A. Brandt  
Ms. Ruth J. Brawley  
Ms. Kathleen A. Brehmer  
Mr. David J. Bremner  
Robert X. Brennan  
Ms. Nancy Breslin and Mr. Robert W.  
Breslin  
A L. Breugem-Horlick  
Ms. Inga Bricio  
Charles W. Briggs  
Ms. Deborah Brillhart  
Mr. James L. Britt  
Mrs. Helen Brown  
Ms. Linda Brunner  
Ms. Barbara V. Brusco  
Mrs. Karol L. Bryan  
James Buchholz and Lynne Buchholz  
Miss Melody S. Buck  
Ms. Susan Bullock  
Christine Burkart  
Dr. Lynn K. Bursten  
Ms. Betty Busch  
Ms. Ivy Buster  
Ms. Beverly Buswell and Mr. Nelson C.  
Buswell  
Mrs. Nancy Butler  
Charles D. Byers-Blaksmith and Linda  
Byers-Blaksmith  
Mr. Alan Caplan  
Mr. Irving S. Caplan  
Mr. John Careccia  
Ms. Jean Carley  
Ms. Louise Carlson  
Ms. Leslie K. Carper  
Mr. Chip Carroon  
Mr. and Mrs. Randy Castellini  
Mr. Allan Otis Cate  
Mr. Lionel G. Cavallini, M.D.  
Arlene Cavanaugh  
Ms. Lisa Chaffin  
Mr. Joseph B. Chaiklin  
Ms. Margot Chamberlain  
Mr. Dan B. Chapman  
Ms. Beverly Chapman  
Ms. Diane Chapman  
Mr. Everett W. Chard  
Mr. Matthew Charles  
Mr. Frank Charlton and Ms. Joan Charlton  
Dolores Chavez  
Ms. Judith Checker  
Mr. David Chelimer  
Ms. Margaret Childs-Wetsel  
Eugenia Chilton  
Ms. Marta Chilton  
Ms. Winifred Ciaccio  
Barbara Clapp  
Sandra B. Clark and Tony Dixon

Tom Clarke  
Ms. Hilda B. Classon  
Ms. Christen Cleary  
Mr. Lewis C. Clemens  
Ms. Martha R. Clements  
Mr. Derek Clode  
Liane C. Casten  
Mr. and Mrs. Lawrence Clow  
Ms. Debbie Coffman  
Mrs. David Cohen  
Barbara Coleman  
Gladys L. Coleman  
Brian Collins and Carolyn Collins  
Ms. Donna Collins  
Mr. Milton Colman  
Marcie Colpas  
Mr. and Mrs. Steve Confer  
Ms. Patricia S. Conner  
Ms. Judith Connors  
Ms. M. Alison Contos  
Mr. Robert B. Cook  
Ms. Ruth Cook  
Mr. and Mrs. R.G. Cooper, Jr.  
Ms. Kathryn L. Corbett  
Ms. Joy Cordery  
June E. Cornelius  
Mrs. Theresa Corner  
Gerri D. Corvino  
Jan M. Corwin  
Ms. Jean F. Costa  
Mr. Thomas T. Craft and Ms. Sarah Hazen  
Ms. Diann Creager  
Bobbie and Burton Crook  
Leona Crownover  
Mr. Robert J. Cukla and Ms. Julie Flaherty  
Janet L. Culbertson  
Dr. Brian C. Cummings, V.M.D.  
James C. Cummings  
Ms. Juliette M. Cunico  
Hope Curtis  
Mrs. Lisa Curtis  
Dagmar Cushing  
Mrs. Kelly J. Cutshall  
Ms. Adriana Da Silva Toni  
Mr. and Mrs. Wint Dahlstrom  
Mrs. Ethel Daly  
Ms. Karin R. Danby  
Nina Danielson  
Betts W. Dann  
Ms. Jeri Dantzig  
Mr. Tim Daulton  
Ms. Catherine A. Davidson  
Mr. John Davies  
Mr. Roy J. Davis and Ms. Andrea Davis  
Mrs. Alice M. Davis  
Mrs. June F. Davis  
Ms. Bonnie Davis  
Ms. Darby Davis  
Ms. Deborah Davis  
Gabrielle Dawson  
Ms. Marilyse de Boissezon Hamm  
Ms. Beatrix M. de Gréve  
Ms. Patricia T. De Lemos  
Elizabeth De Wreede  
Phyllis H. Deal  
Ms. Mary Ann Dean  
Mrs. M.C. Decker  
Ms. Edith M. deGroot  
Ms. Barbara Delgado  
Amy Dellefield  
Rita DelRey  
Paul L. Dempsey  
Ms. Ruth Denison  
Ms. Kayleen A. Devier

James B. DeVries  
Mr. Alexander H. Dewey  
Mr. Buddy Diamond  
Mrs. Trudi C. Dido  
Mrs. Rita L. DiGenova  
Ms. June H. Dilgard  
Debra D. DillMichael Dill  
Dr. S. Dinnerstein  
Ms. Rhoda O. Dion  
Gary R. and Linda L. Dionne  
Ms. Loretta G. Ditlow  
Mr. Michael L. Dixon  
Mr. Martin Dodge  
Mr. Gilbert Doering  
Christine M. Doerr  
Mr. Clinton Donelson  
Ms. Rose M. Donnelly  
Mr. Weldon R. Donsbach  
Barbara Doroba-Ogg and Michael J. Ogg,  
MD  
Ms. Paula Dougherty  
Mrs. Martha Dragovich  
Pamela G. Drew  
Mr. Gary H. Driver  
Ms. Jane A. Dryja  
Mr. and Mrs. Richard Duchin  
Ms. Gretchen W. Dumler  
Ms. Paula Dunham  
Ms. Lisa J. Dunlap  
Mr. Steve Durci  
Ms. Winifred J. Dushkind  
Gail Dustin  
Mrs. Ruth Dwork  
Ms. Teresa Dwyer  
John Dziedzic  
Ms. Elaine M. Eaglesham  
Mr. Roger W. Eames  
Mr. John Eastman  
Mr. Roger Eastman  
Jules F. Eberhard  
Ms. Gerrie Ebert  
Mr. Roger E. Edens  
Mrs. Joyce Egyes and Mr. Leslie Egyes  
Mr. Laird M. Ehlert  
Mrs. Alice I. Ehrhardt  
Mrs. Lois Einarsson  
Mr. and Mrs. Arthur Eisenkramer  
Ms. Karen A. Ellis  
Ms. Kerstin Ellstrom  
Karen Embertson  
Ms. Patricia Enders  
Ms. Mary Essman  
Pamela Faler  
Ms. Inge Falken  
Mr. Ernest Farmer and Ms. Renate Farmer  
Ms. Helen T. Farr  
Mr. Francis C. Farwell and Laura Farwell,  
Ph.D.  
Ms. Elaine Farwell  
Miss Helen F. Faust  
Ms. Shirley Fay  
Dr. Donald Feinsilver  
Mr. Peter Feinsinger  
John and Donna Fenn  
Ms. Ingrid Ferguson  
Betty Fernandez and Manuel Fernandez  
Mr. Raul Fernandez  
Mr. Carl Ferree  
Ms. Teresita Q. Finch  
Martha M. Finkel  
Ms. Jo Ann C. Finocchio  
Mr. Bob Fischella  
Mr. James Fish  
Ingeburg Fisher

Mr. Allen Fitz-Gerald  
Mr. Dan Fleming  
Mrs. Denise Fletcher  
Ms. Maureen Florence  
Ms. Barbara L. Flowers  
Gunther Fonken and Agnes Hughes  
Charles and Janice Forman  
Mr. Seth Fortunate  
Mr. Donald T. Foster  
Ms. Lucille R. Foster  
Mr. Chris Foulke  
Ms. Sarah Francus  
Ms. Helene Frankel  
Heide and Alan Freed  
Daniella Freitas  
Mrs. Dale S. Freitas  
Mr. Marc B. Fried  
Ms. Hallie Friedman  
Mr. Louis E. Frosh  
Patricia L. Frye  
Ms. Kathryn Funk  
Ms. Louise Gaby  
Mr. John P. Gaffney  
Ms. Patricia J. Gahan  
Ms. Marie R. Galda  
Mr. Ken Gallard  
Ms. Carla Galois  
Mrs. Beverly Gardiner  
Ms. Jane Garland  
Louise Gasior  
Ms. Winifred M. Gegg  
Ms. Dorothy Geiger  
Dr. David Geisinger  
Ms. Marilyn Gelber  
Mr. Albert Geller  
Mr. David F. Giannuzzi  
Mr. Jerry Gibbs  
Mr. Michael Gibbs  
Mr. and Mrs. Elmer M. Giles  
Ms. Annie M. Gillespie  
Mr. Charles M. Ginsburg  
Mark Gioia  
Mr. Vanchinathan Giri Janardhanan  
Mr. David Glaser  
Mr. Charles B. Glass, Jr.  
Mr. and Mrs. Kirk F. Glauser  
Mrs. Robert Glazier  
Ms. Ruth S. Gleason  
Mr. Luke Glosserman  
Dr. Linda Gochfeld  
Marjorie Lundy and James Godshalk  
Mrs. Alice E. Goglin  
Steve and Monique Goldstein  
Ms. Roberta D. Goldstone  
Mrs. Erma M. Good  
Mrs. Diana H. Goodhart and Mr. John W. Goodhart, Sr.  
Mrs. Rosemary Gorra  
Mr. Eben Gossage  
Ms. Esther Gottlieb  
Ms. Christina Graybill  
Mr. Clark R. Green  
T.J. (Tom) Green  
Ms. Janny Greenlee  
Col. Frank Gregg and Ms. Grace Gregg  
Mr. John F. Gregory  
Ms. Julie Griffin and Austin Griffin  
Mr. Robert Griffiths  
Mrs. George Grillo  
Rev. Daphne Grimes  
Ms. Elaine Gronskis  
Mr. Robert R. Gross  
Dr. Gary L. Groves  
Ms. Carolyn L. Groves

Mr. and Mrs. Henry Guevara  
Ken Gunther  
Mr. Philip Gurian  
Ms. Judith Gutfleisch  
Mr. Robert B. Hagedorn  
Margery L. Hagg  
Ms. Shirley A. Hahn  
Mr. Peter Haiman  
Mr. Bob Hajla  
Mr. Tom L. Hale  
Frances J. Hall  
Ms. Marie L. Hall  
Ms. Linda Halliday  
Ms. Melissa Hamilton  
William Hammer  
Mrs. Jim Hammons and Nan Hammons  
Ms. Sallie Hanna-Rhyne  
James Hansen  
Ms. Joyce C. Hansler  
Ms. Sarah Hanuske  
Ms. Laurie Harberson  
Mr. John R. Hardendorf  
Mary E. Harkins  
Ms. Ellen H. Harris and Mr. Ellis Harris  
Ms. Virginia B. Harris  
Mr. Charles O. Harrison  
David and Emily Hart  
Mrs. Priscilla Harthan  
Ms. Phyllis Hasheider  
Ms. Mary Hasson  
Dr. and Mrs. David Hattem  
John Hatton and Patricia Hatton  
Ms. Leslie Hatton and Mr. David Hatton  
Mr. Robert D. Hawck  
Christine R. Heidtke  
Thomas Heinrichs  
Ms. Gloria Heinzl  
Ms. Jan Hejtmanek  
Ms. Marie Henderson  
Miss Margaret Hendricks  
Ms. Nina L. Hendrix  
Loh Heng-Mui  
Mr. John Henle  
Mr. Robert Henry  
Ms. P. S. Herbert  
Ms. Phillis Herbster  
Ms. Fried D. Herman  
Pilar Hernandez  
Ms. Bee Herrmann  
Mr. David W. Hester  
Maren Hexter  
Mr. Karen D. Hickman  
Mrs. Wanda Higbee  
Mr. John Higgins and Ms. Carol Keith  
Miss Anne Hill  
Ms. Gale B. Hill  
George Hiller  
Ms. Margery Hinds  
Ms. Joan Hinske  
Ms. Alice Hinson  
Mr. James R. Hipp  
Ms. Elaine C. Ho  
Mr. Harris Hobby and Ms. Sharon Hobby  
Ms. Margaret Hodges  
Laurel Hodkin  
Mr. Isidore Hofferma and Mrs. Sharon Hofferma  
Helen Hokom  
Mrs. Betty M. Holderman  
Diane Hood  
Ms. Robin Hopkins  
Mr. John W. Hosmer  
Ms. Catherine Hoss  
Mr. Thomas Houlden

Ms. Genevieve K. Howe  
Mr. Paul Howes  
Mr. William Hughes  
Barbara B. Hultgren  
Mr. Carroll A. Huntington, Jr.  
Ms. Janice Hurd  
Ms. Sybil Husted  
Mrs. Jean Huston  
Ms. Bethany Hutchinson  
Ms. Phyllis A. Hyde  
David and Arlene Iacono  
Katherine E-G Iacovelli  
Ms. Elizabeth Ingalls  
Mr. Ken Irwin  
Maureen Ivy and Jay Berger  
Ms. Martha Iwagaki  
Mr. and Mrs. William Jackson  
Michael Jacobowitz  
Mr. Jacques F. Jacobson  
Mrs. Gail Jacobson  
G. A. and Barbara M. Jamieson  
Ms. Julianne Jankowski  
Ms. Karen Jefchak  
Ms. Linda Jeffords  
Ms. Carol D. Jensvold  
Lt. Col. Maddie P. Jims, RET  
Mr. Arthur Johnson  
Mr. Charles L. Johnson  
Mr. Robert B. Johnson  
Mrs. Beda I. C. Johnson  
Mrs. Elizabeth A. Johnson  
Ms. Anna-Kajs Johnson  
Ms. Geraldine Johnson  
Ms. Karina K. Johnson  
Ms. Mary Johnson  
Ms. Sarah L. Johnson  
Rachel Brundred Johnson  
Mr. and Mrs. Henry Jonen  
Mr. Kent O. Jones and Mr. Nick Vavrichek  
Ms. Peggy J. Jones  
Mr. Cornelis Jongepier  
Mr. Gil Jordan  
Rev. Patrick M. Jordan  
Susan L. Jory  
Mr. Leonard M. Jozulin  
Mr. and Mrs. Neil D. Judd  
Mrs. Patricia Judd  
Ms. Elise Junkans  
Ms. Gerritdina Justitz  
Miss Vera Kahler  
Ms. Myra Kaiser  
Ms. Eileen Kamison  
Ms. Helga Karker  
Doris and John Karle  
Mr. David R. Kass  
Mr. Roger E. Kazanjian  
P J. Keagle  
Mr. Joe Keane  
Ms. Joanna Keeley  
Ms. Bessie M. Keens  
Mr. Robert B. Keiser  
Ms. Pearl Kellar and Mr. Robert J. Kellar  
Wayne H. Keller  
Mr. Thomas C. Kelly  
Mr. Louis F. Kemp  
Ms. Shirley B. Kemp  
Mr. Garth Kemper  
Mrs. Clair Kennison  
Mr. and Mrs. K. Kenzel  
Mr. Arnold Ketels  
Mary Anne Keul  
Ms. Dorothy M. Keyser  
Kerryth Kilduir  
Kineta Kindell

Mrs. Dorothy L. King  
Ms. Terry Kirkland  
Mr. and Mrs. Glenn Kissinger  
Mr. Hyman J. Klein  
Mr. Donald H. Knapp  
Ms. Vesta Knuth  
Miss Judith R. Kobayashi  
Ms. Jill Koch and Ms. Diane Miller  
Mr. Charles Kohlhase  
Ms. Joan Kolobielski  
Mrs. Mary Ann Kooker  
Mr. Francis J. Koppeis, Jr.  
Barbara Korman  
Mr. F. R. Kramer  
Mr. Robert H. Kranich  
Ms. Ilona Kratz  
Mr. Jon Krecker  
Susan Krell and Arthur Krell  
E. Salem Krieger  
Nancy Kroeger  
Mr. Walter W. Krug  
Ms. Mary Kruk  
Miss Margaret Kruse  
Mr. John S. Kudella  
Mrs. Jean E. Kyle  
Ms. Joline La Mond and  
Mr. William La Mond  
Mr. Christopher Lack  
Sandra Davis Lakeman  
Mr. Thomas Lamb  
Ms. Marie J. Lampkin  
Mr. Thorsten Landwehr and  
Ms. Mary Landwehr  
Mr. Charles Lang  
Toni L. Langland  
Mr. and Mr. Larry K. Larson  
Ms. Karen Lassen  
Ms. Elizabeth Laucks  
Mr. William Laudani  
Ms. Sharon Lavar  
Mr. John Lawrence  
Mrs. Ann Lawrence and Marcia Duoba  
Mr. Durwood Lawson  
Mr. Arthur Laxer  
Mr. Stephen L. Lazan  
Ms. Sharon Lazar  
Ms. Rayna B. Lazaroff  
Dr. Guy and Nadia Leadbetter  
Trina J. Leaf  
Mr. Stanley Lederman  
Ms. Patricia Lee  
Barbara Leeper  
Eileen and Paul Le Fort  
Don Leighton-Burwell and Pam Leighton-Burwell  
Ms. Rhonda Leo  
Mr. Alan Leong  
Ms. Patricia Leslie  
Ms. Betty Letsche  
Ms. Betty E. Levinson  
Larry Lewack  
Mr. James Licata and Ms. Elizabeth Licata  
Mr. Ralph Lichtenstein  
Joseph Liebling  
Mr. Lowell G. Liedman and Ms. Ingrid E. Liedman  
Mr. Clifford J. Liehe  
Mr. James Ligoretti  
Mr. Larry L. Lindsay  
Ms. Lynda Lindsay  
Mr. William K. Lindsey  
Ms. Marilynn Liotta  
Mr. Don L. Lipmanson  
Mr. Ramon V. Lockier

Mrs. Louise Lockwood-Zorowski  
 Ms. Charlotte L. Loeb  
 Ms. Joan A. Loewenthal  
 Ms. Renate C. Logan  
 Mrs. Margret E. Lohfeld  
 Ingodwee Trust, Mr. David T. Lonier,  
 Trustee, Ms. Glenna Long, Trustee  
 Ms. Eleanore Lorton  
 Miss Sareska Lugo  
 Marione Luke  
 Mr. Larry Lundberg  
 Mrs. Doris M. Lundmark  
 Brian R. Lundy and Sandra L. Lundy  
 Dr. Kathleen Lynch  
 Mr. Edward L. Lynch  
 Ms. Karen D. Maddio  
 Helga Magar  
 Ms. Rose P. Magee  
 Nevio Maggiora  
 Larry Maillet  
 Mrs. Virginia Maina  
 Mr. Henry Males  
 Mr. Gary D. Malesky  
 Cecilia Malingkas Lai  
 Mrs. Orchid M. Malloy  
 Mr. Timothy Maloney  
 Mrs. Billie G. Manck  
 Mr. Mark Mandelkern and  
 Mrs. Lisa Mandelkern  
 Sharon T. Mandell  
 Ms. Mariana J. Manzo  
 Howard A. Markham  
 Dr. and Mrs. Sanford E. Marovitz  
 Ilona I. Marshall  
 Ms. Carole S. Marshall  
 Ms. Mary E. Marshall  
 Ms. Melissa Martel  
 Mr. Henry A. Martin  
 Ms. Mary Rose Martin  
 Ms. Nancy A. Martin  
 Ms. Lillian W. Masters  
 Ms. Alma Mather  
 Nadya Mathison  
 James W. Matthews  
 Mrs. Nedra Matthews  
 Ms. Eleanor Mattusch  
 Mr. Robert Matulich  
 Mr. Arthur A. Maule  
 Mr. Fred J. Maynard  
 Mrs. Barbara J. Mc Dougal  
 Leslie Mc Cain  
 Mr. Edmund Mccann  
 Mrs. Sally McCarthy  
 Ms. Jacqueline G. McCauley  
 Kathleen Mccloud  
 Anne Mccoy  
 Ms. Janet L. McCrory  
 Ms. Bonnie McDonald  
 Madelon Mcgowan  
 Ms. Sandra McKown  
 Mr. Ralph D. McKuhen and  
 Ms. Susan McKuhen  
 Mr. Michael Mclean and  
 Ms. Collette Castro  
 Mr. Steve McMaster  
 Susan Mcmillan  
 Ms. Frances McNair  
 Ms. Bonnie McPherson Killip  
 Ms. Doris McPherson Taylor  
 Ms. Deborah McTernan  
 Ms. Sonja Meadows  
 Kathleen C. Meagher  
 Mrs. Dorothy Marie Meincke Heroy  
 Mr. Anthony Melchior  
 Cindy Mench  
 Ms. Ruth Mergler  
 Ms. Jane R. Merrill  
 Mdm. Janine Metz  
 Mr. Norman Meyer  
 Mrs. Lenore Meyer  
 Ms. Loraine V. Meyer  
 Mr. Lawrence S. Meyran  
 Jacqueline Miller  
 Ms. Ocoee Miller  
 Norma Miller  
 Ms. Betty Millward  
 Mr. Larry Milosky  
 Mr. Carl Milton  
 Ms. Mindy Mindlin and Dr. Roy Levine  
 Ms. Patricia Minnick  
 Dr. Ellen Mitchell  
 Mrs. Evelyn K. Mittleman  
 Evangeline Mix  
 Mr. and Mrs. Preston Moe  
 Felicitas Moen  
 Mr. Aaron Moeser  
 Linda A. Mok  
 Dr. David Monheit  
 Mr. Gerald E. Monroe, Jr.  
 Ms. Angelina Montella  
 Ms. Marika Mooyman  
 Ms. Susan Moran  
 Ms. Beverly A. Morgan  
 Ms. Kathryn E. Morris  
 Miss Carol Morrison  
 Ms. Jeanette M. Morrison  
 Mrs. Carole Morton  
 Dr. Ellie A. Moses  
 Carla B. Moss  
 Dr. Paul Moss  
 Ms. Irene Mostek  
 Ms. Joanne E. Moyer  
 Mr. Victor Mueller and Mrs. Marion  
 Mueller  
 Ms. Paula P. Mueller  
 Ms. Phyllis Mueller  
 L J Murawski  
 Mr. Nicholas T. Murphy  
 Ms. Kerrin J. Murphy  
 R. M. Murphy  
 Timothy Murphy  
 Mr. Kailash Murthi  
 O. Ruth Najacht  
 Ms. Rosa Naparstek  
 Ms. Judith E. Naughton  
 Ginger Navarro  
 Mrs. Toni Nease  
 Tobin Nellhaus  
 Mrs. Ferrald C. Nelson  
 Mr. Charles H. Newman  
 Ms. Carol L. Nicholson  
 Ms. Sharon Nicodemus  
 Mr. Donald M. Nicolson and Mrs. Virginia  
 Nicolson  
 Mr. Henry Nielsen  
 Ms. Diane J. Nielsen  
 Mr. and Mrs. Harry Niemiec  
 Ms. Emma L. Nikl  
 Mrs. Sonja Nikolay  
 Ms. Jill North  
 Ms. Louise B. Nusbaum  
 Ms. Elene R. O. Sayre  
 David O'Brien  
 Mr. Mike O'Connor  
 Ms. Gretchen Oelhaf  
 Mr. Steven H. Olanoff  
 Ms. Audrey Oldmen  
 Don Olson and Mary Olson  
 Ms. Kris Olsson  
 Mr. Robert Onan  
 Ms. Ramona O'Neil  
 Mr. Walter Oppenheim  
 Mose Orion Oppenheimer  
 Mrs. Teruko S. Orel  
 Mr. Robert Ormond  
 Mr. Arne E. Osterby  
 Ms. Anne Ouellette and Mr. Eugene  
 Ouellette  
 Ms. Margreta Overbeck  
 Mr. Stan Ozbolt  
 M. Adella Pace  
 Margarita Padilla  
 Ms. Joan Palmer  
 Mrs. Wilson Park  
 Ms. Judith Parks-Di Franco  
 Susan C. Pasquarello  
 Ms. Karen J. Pataky  
 Elaine A. Pavlick  
 Edgar and Phyllis Peara  
 Celest Pearsall  
 Mr. Peter Pendleton  
 Mr. Tony Pereira  
 Fiona Perkins  
 Ms. Laura C. Perreault  
 Ms. Nancy Petashnick  
 Ms. Lisa Peterman  
 Mr. Thomas Peterson  
 Mrs. Shirley Peterson  
 Ms. Kristina E. Peterson  
 Beatrice Petito  
 Ms. Susan J. Petra  
 Ms. Alice Pettyjohn  
 Mr. Clay Phennicie  
 Bradley P. and Lili Phillips  
 Patricia Phillips  
 Mr. and Mrs. Michael W. Picioccio  
 Mr. and Mrs. Clarence Piela  
 Mrs. Mary Pierson  
 Gail Pigeon  
 Ms. Mary C. Pinell  
 Theodore and Eleanor Pirozek  
 Mr. Alfred C. Plant and Ms. Petra Plant  
 Mr. Mark Podhorecki  
 Miss Mary Porter  
 Mrs. Vera Porter  
 Mr. Charles A. Pospisil  
 Miss Myrna B. Pototsky  
 Mr. Mike Powers  
 Mr. David Charles Prescott  
 David Preston  
 Gregor A. and Ann C. Preston  
 Philip Preston  
 Mrs. Esther R. Price  
 Ms. Agnes Priddy  
 Mr. Winston Prior  
 Mr. Todd Provost  
 Ms. Elissa Querzé  
 Sheila Quinn  
 Mr. Alberto Ramon  
 Ms. Joann S. Ramos  
 Glen RayJudith Macnak  
 Miss Ruth Ray  
 Ms. Claudia Ream-Pinedo  
 Sister Janet Rectenwald  
 Nancy Corse Reed  
 Ms. Eva Reese  
 Mr. Jerry Reidy  
 Ms. Patty Reis  
 Mr. Justus E. Requa  
 Mr. Sol J. Resnikoff  
 Ms. Helen Rodes Reutlinger  
 Mr. Henry Reynolds  
 Ms. Rita C. Reynolds  
 Mr. Walter Rheinheimer  
 Mrs. Ruth Riba  
 Mrs. Beirne W. Richmond  
 Capt. Eugene M. Riddick  
 Ms. Candace Ridington and Mr. Jack  
 Lebowitz  
 Peter and Deborah Rieman  
 Mr. Hunter Rieseberg  
 Ms. Virginia Rifkin  
 Ms. Sarah L. Riha  
 Mrs. Theron Rinehart  
 Ms. Beverly I. Riverwood  
 Ms. Valerie Robbins  
 Lloyd Roberts  
 Ms. Ada T. Robertson  
 Ms. Robin Robertson  
 Mr. Donald Robins  
 Ms. Selena Robison  
 Ms. Marilyn Rodriguez  
 Mrs. Elaine Roeder  
 Mr. David Roloff  
 Peter P. Romeo  
 Ms. Christa Romppanen  
 Ms. Janet Rontz  
 Rev. and Mrs. Arvin Roos  
 Mr. and Mrs. Edmond Root  
 Ms. Kay Rosen  
 Rachel Rosenbach  
 Mr. Marvin L. Ross  
 Ms. Luba Ross  
 Ms. Sarah Ross  
 Ms. Shirley L. Ross  
 Ms. Shirley Rote  
 Mr. Peter Rothe  
 Dr. Patricia Rozee  
 Ms. Mathilde Rubin  
 Ms. Cynthia E. Rufty  
 Ethelyn M. Rund  
 Ms. Ruth A. Russell  
 Ms. Diana Rutherford  
 Ms. Nellie J. Ryder  
 Ms. Ruth H. Ryer  
 Mr. Winfred Ryle  
 Ms. Melanie Ryska  
 Mrs. Jeannette Safran  
 Ms. Marcia Sampson  
 Susan M. Santilli  
 Ms. Joan B. Sasso  
 Ms. Kim Sather  
 Ms. Frances S. Sauer  
 Ms. Tanya Saunders  
 Ms. Jackie L. Saylor  
 Ms. Jean Schauffler  
 Mr. Herbert Scheper  
 Ms. Kathi Schery  
 Florence Schiffman CSW  
 Barry and Libby Schiller  
 Miss Virginia Schlecht  
 Mrs. Robert J. Schlegel  
 Ms. Lillian Schloss  
 Mrs. Juanita R. Schneider  
 Ms. Florence M. Schneider  
 Mrs. Caroline A. Schnoor  
 Ms. Nancy Schoemaker  
 Ms. Lynne Schomaeker  
 Mrs. Judith W. Schrafft  
 Ms. Marita Schrauf and Mr. John Schrauf  
 Mr. Alfred C. Schroeder  
 Mr. Urs Schuler  
 Ms. Karen Schumaker  
 M Hugh Schwab  
 Alan and Barbara Schwartz  
 Steve Schwartz

Ms. Connie Scontrino  
Ms. Athena Scotos  
Mrs. Barbara H. Scripser  
Mr. Robert Sedivy  
Mr. Steve Seebold  
Dr. Adolph Segal  
Ms. Marjorie Segal  
Jacqueline Sehm  
Shirley Seireg  
Ms. Doris W. Seney  
Ms. Suzanne Shafer  
Garry R. Shapiro and Yelena M. Kolodji, CNM  
Ms. Christine Shaw  
Ms. Thelma A. Shaw  
George L. Shepard  
Mr. Max Shepard  
Ms. Anne Shirer  
P. Robert Shrauger  
Ms. Lucy Sidener  
Ms. Sandra Sider  
Mr. and Mrs. Thomas J. Sikorski  
Ms. Carol Sills  
Marla and Louis Silverstein  
Mr. Denis M. Simpson  
Ms. Yvette Simpson  
Ms. Judith Sims  
Ms. Debra Sincere  
Dr. Carol J. Sing  
Bernhard H. Singsen, M.D., M.P.H.  
Ms. Rae L. Siporin  
Mr. Jim Skinner and Ms. Judy Skinner  
Mrs. Naomi N. Skoler  
Dr. Michael Skolochenko  
Mr. Tracy B. Slack III  
Ms. Betty A. Slade  
Ms. Sonya Sleva  
George Smith  
Mr. and Mrs. LeRoy Smith  
Mr. William V. Smith  
Mrs. Jewel M. Smith  
Ms. Barbara Smith  
Ms. Gerda M. Smith  
Ms. Marian B. Smith  
Mr. James G. Snider  
Dr. Sandra L. Snow  
Mr. Gregory Snyder, N.P.  
Ms. Vera E. Snyder  
Jean M. Sommer  
Mr. Charles F. Sommers  
Ms. Joan Sophie  
Mr. James E. Sorensen  
Ms. Elsie Sorgenfrei  
Mr. Gary Spizzen  
Mrs. Ruth Stahl  
Ms. Gayle Stalker  
Timothy Stanhope  
Mr. Walter Stark  
Ms. Linda Steenrod  
Mr. Seth Steiner  
Carol E. Steinhart  
Mr. and Mrs. Michael Stella  
Ms. Marjorie Stephens  
Ms. Sherry L. Sterling  
Mr. Joseph Stern and Ms. Holly Stern  
Mr. Robert E. Stevens  
Mrs. Doris Stevenson  
Lois K. Stewart  
Ms. Joy L. Stewart  
Ms. Carol Stitz  
William Stockard  
Mrs. Cora Stoll  
Ms. Barbara Stoner  
Ms. Sandra Storm  
Mr. Guy W. Stoye

Donna Straat  
Mr. Paul W. Strecker  
Mr. Stephen Streif  
Mr. and Mrs. William Strobel  
Allan Strowd  
Ms. Merle K. Stueve  
Ms. Sheila R. Suarez and Mr. John M. Suarez  
Mrs. Ann L. Sugden  
Gail M. Sullivan  
Ms. Katherine Swain  
Dr. Lynne V. Swanson  
Mr. Charles J. Swartz  
Ms. Eva-Maria Swedlow  
Ms. Mary R. Sweeney  
Mr. Edward Swingle  
Mr. Douglas J. Sykes  
Mr. Frank W. Symonds and Mrs. Ann P. Symonds  
Ms. Elizabeth M. Tallichet  
Miss Mari Taniguchi  
Mr. Donald H. Taylor and Patricia Taylor  
Mr. John D. Taylor  
Mrs. Elizabeth Taylor-Burford  
Ms. Cindy Taylor-Lisenby  
Ms. M T. Tellez  
Ms. Diane Terry  
Mr. Scott Thatcher  
Mr. Donald Thibodo  
Ms. Jackie Thiel  
Charlotte Thiemecke-Floyd  
Mr. Cody Thomas  
Ms. Claudine Thomas  
Ms. Mary V. Thomason  
Mr. Presley Thompson  
Mr. Tom Tice  
Ms. Darlene M. Tomecek  
Ms. Jean Tompkins  
Mr. Stephen M. Town and Ms. Cindy L. Spain  
Ms. Paula Trachtman  
Ms. Mary N. Tragus  
Sara Traum  
Paula R. Trehearne  
Ms. Dorothy Truesdell  
Mr. Curtis Turchin and Ms. Neise Turchin  
Ms. Frances A. Turner  
Ms. Willie L. Turner  
Ms. Joy S. Turowski  
Mr. Ray Unrath  
Ms. Carol J. Urquhart  
Gwen S. Valentine  
Mrs. Ann C. Valsasina  
Ms. Ruth Van Antwerp  
Ms. Anje C. van der Naald  
Ms. Dee Van Leeuwen  
Mr. Alfred Vanacore  
Ms. Harriette Vanderford  
Mrs. Gilberte Vansintjean-Glaser  
Ms. Christie L. Vella-Kramer  
Debbie Velthuisen and Robert Velthuisen  
Miss Raima Verasmende  
Lynne Veriotti  
Mr. Heinz J. Villain  
Dorothy M. Vislocky  
Mari Vlastos  
Jerry and Connie Voight  
Philip H. von Lintel MD  
Ms. Erika M. Voss  
Mr. Raymond L. Wager  
Ms. Joan M. Wagner  
Mr. Robert Wakefield  
Mr. Dan Walcott and Mrs. June Walcott  
Mrs. Lois Waldref

Mrs. Frances Walker  
Mrs. Susan Walker  
Ms. Margery L. Walker  
Ms. Holly Wallace  
Mrs. Romaine Walsh  
Ms. Virginia E. Ward  
Mr. David Warfel  
Ms. Suzanne Waritz  
Ms. Patsy Warlock  
Dr. Mary Anne Warren  
Mrs. Pat Watson  
Ms. Delores A. Watts and Mr. William Watts  
Richard S. Waxman  
W. Earl Wear  
Mr. Edward Webb  
Ms. Jane Webb  
Mr. Robert C. Weber  
Ms. Jackie Wein  
Victor K. Weisberger  
Mr. Albert N. Wells  
Mr. Walter G. Wells  
Ms. Diana E. Wessell  
Vicki K. Westberg  
Mr. Steve R. Westergan  
Ms. Vivian Westerman  
Curt Westley  
Ms. Elaine C. Weston  
Mr. Tom W. Wetterer  
Mrs. Max Weyl  
Thamar Wherrit  
Mr. Ensley White  
Mr. Richard White  
Ms. Doris E. White  
Ms. Micki White  
Neal White  
Ms. Elizabeth Whitehill  
Mr. Russell Wild  
Rev. Arlene R. Wilhelm  
Miss Anna Wilkin  
Miss Betty B. Willey  
Mr. Stephen Willey and Ms. Elizabeth Willey  
Mr. Roger Williams  
Mr. Rob B. Willis  
Mrs. Rene Willis-Durham  
Mr. Harold G. Wilson  
Mrs. Jean Wilson  
Mr. Mark A. Winn  
Ms. Vivian Winterman  
Margaret Julian Wisdom  
Frank Wiskowski  
Mr. and Mrs. Robert Witzeman  
Ms. Janet M. Wlodek  
Ms. Charlotte Wolf  
Caprice Wolfer  
Ms. Diane Wolfson  
Mr. H. Mickey Wolk  
Dr. Donald and Marcia Wolochow  
Mr. Roger M. Wolverton  
Mr. Adolph J. Wood  
Mr. and Mrs. Roy Wood  
Mr. Peter H. Wood  
Ms. Barbara Wood  
Ms. Johanna Woodchild  
Dr. Roger K. Woods  
Ms. Margot Worfolk  
Darby Moss Worth  
Dr. Beatrice Wright  
Ms. Regina Wright  
Mr. George C. Yeramian, Jr.  
Jan Yoder  
Mrs. Ruth Yoshioka  
William Yothment  
Mr. and Mrs. James Young  
Mr. George T. Younis

Mrs. Helen Zeeman  
Mr. and Mrs. Michael Zeiler  
Miss Mary J. Zerwas  
Jo A. Ziegler  
Ms. Wilma J. Zinser  
Mr. Emil Zollinger  
Mr. Ed Zondag and Mrs. Sharon Zondag  
Ms. Martha M. Zweig

### Legacy Gifts

Ruth Afflack  
Sophie C. Aksel  
Opal A. Anderson  
Frances B. Bancroft  
Marjory L. Berman  
Mary Jane Better  
Pascal Biagini  
Edward Blust  
Eugene Bodoh  
Martin Brandeis  
Goldian Vanden Broeck  
Wilma Buchman  
David A. Burton  
Don & Ruth Cluster  
Andrew J. Culver, Jr.  
Michael J.T. de Tarnowski  
Rocco DeStephano  
Elizabeth Deubert  
Michael H. Dietz, M.D.  
Patricia Driscoll  
Barbara Fauser  
Frances F. Ford  
Melvin Friedman  
Ruth H. Geffers  
Morton Goldsmith  
Florence Gorgy  
Henrietta (Lerner) Hahn  
Elaine Hanley  
Gale Henning  
Clare S. Hodgins  
Bruce Hotek  
Gertrude A. Irwin  
Vicki Julian  
Regina W. Lee  
Ellen B. Lee  
Howard L. Marcou  
Barbara McEwen  
Ella Medwin  
Edith (Bette) Miller  
Daniel Morrill  
Virginia Smathers Myers  
Evelyn Neleson  
Helga Nordkamper and Dorothy R. Brunn  
Ethel R. O'Mara  
Martha J. Palmer  
Nevelyn Patton  
Virginia H. Perkins  
Nora Perrett  
Cheryl Plaisted  
Elizabeth H. Pollak  
Alice C. Pratt  
Vila M. Rosenfeld  
Rita A. Ryan  
Judy Ryan  
JoAnn Schwartz  
Svien Siemen  
Katherine Solomon  
George Solomonoff  
Monica Spurlock  
Charlotte Stanley  
Catherine Staples  
Allan Summit  
Dona Taylor  
Rosalie Williams  
Alyson Youngson

# Gift Planning

Over the years, millions of individuals have contributed the financial resources that make the work of Greenpeace possible. We realize that, in addition to the desire to support the work of Greenpeace, many of our supporters are planning for what they will bequeath to their families or considering how to include philanthropy in effective personal financial planning. Because of this, we are dedicated to assisting those who wish to make gifts now and in the future in ways that can contribute powerfully to the mission of Greenpeace and be effective tools for managing your own money.

A broad range of flexible ideas is available to plan gifts whether you are single, married, raising a family, planning for retirement, or already retired.

## Wills and Living Trusts

You can easily show your commitment to tomorrow by remembering Greenpeace Fund in your will or living trust, today. These gifts provide a legacy of continuing support for Greenpeace Fund.

Here is an example of a way to phrase your intentions: "I \_\_\_\_\_ give (specific amount, percentage, or residual estate) to Greenpeace Fund, Inc. currently of 702 H Street NW, Suite 300, Washington, DC 20001 for its general purposes." (Tax ID# - 95-3313195) For more information, please contact us.

## Gifts that Provide an Income to You or Others

Combine your long-term financial and charitable goals with a Greenpeace Fund gift annuity or by setting up your own charitable remainder trust. These gifts provide payments to you or a loved one, create immediate tax savings, and leave a legacy to Greenpeace.

Additionally, a charitable lead trust can provide a substantial gift to Greenpeace over a period of years while ensuring that the assets used to fund the trust will ultimately return to you or your loved ones.

Please contact us for a personalized illustration of how these types of gifts can work for you.

## Gifts of Retirement Funds or Life Insurance

After a life insurance policy, IRA, 401(k), 403(b), or similar qualified retirement plan has fulfilled its purpose of providing for you and your loved ones, you can donate the remainder to Greenpeace Fund. Ask your plan administrator, insurance agent, or benefits manager for a change of beneficiary form to name Greenpeace Fund to receive all or a portion of the proceeds.

The legal name and Tax ID number to use for beneficiary designations is Greenpeace Fund, Inc. Tax ID# 95-3313195.

## Giving Assets Other Than Cash

If you own stocks, mutual funds or other securities that are worth more than you paid for them and you have owned for longer than one year, you may wish to consider using them to make your gift to Greenpeace. Certain gifts of real estate can also make excellent charitable gifts. Please contact us for stock transfer instructions or to discuss a gift of real estate.

If we can be of assistance to you or your advisors in your charitable gift planning, please don't hesitate to contact us. And if you've made Greenpeace Fund the beneficiary of your charitable planning, please let us know. We would like very much to acknowledge your very special gift.

## Contact Us

**Gift Planning Director: Corrine Barr**  
**Gift Planning Specialist: Tamara Lane**  
**Phone: 1-800-328-0678 or 1-800-621-6038**  
**Email: [corrine.barr@greenpeace.org](mailto:corrine.barr@greenpeace.org) or [tamara.lane@greenpeace.org](mailto:tamara.lane@greenpeace.org)**  
**[greenpeace.aboutgiving.net](http://greenpeace.aboutgiving.net)**

Provided for informational purposes only and should not be considered legal, accounting, or other professional advice.

Greenpeace Supporter Martha Vinick points out, "Supporting Greenpeace is the best thing I can do for my own family and for everyone else's children and grandchildren. I'd like to leave something better for my grandchildren than stocks and bonds. I'd like them to inherit a healthy a beautiful planet."



# Greenpeace Worldwide

Greenpeace has a presence in over 40 countries across the globe. Stichting Greenpeace Council, a charitable foundation in the Netherlands, licenses each office to use the Greenpeace name. Although every Greenpeace office has full control over its own activities, they all share a commitment to eradicate the most dangerous threats to our planet's biodiversity and ecology. Examples of Greenpeace's efforts against such threats, internationally, as well as in the United States, are highlighted throughout this report.



## Greenpeace China

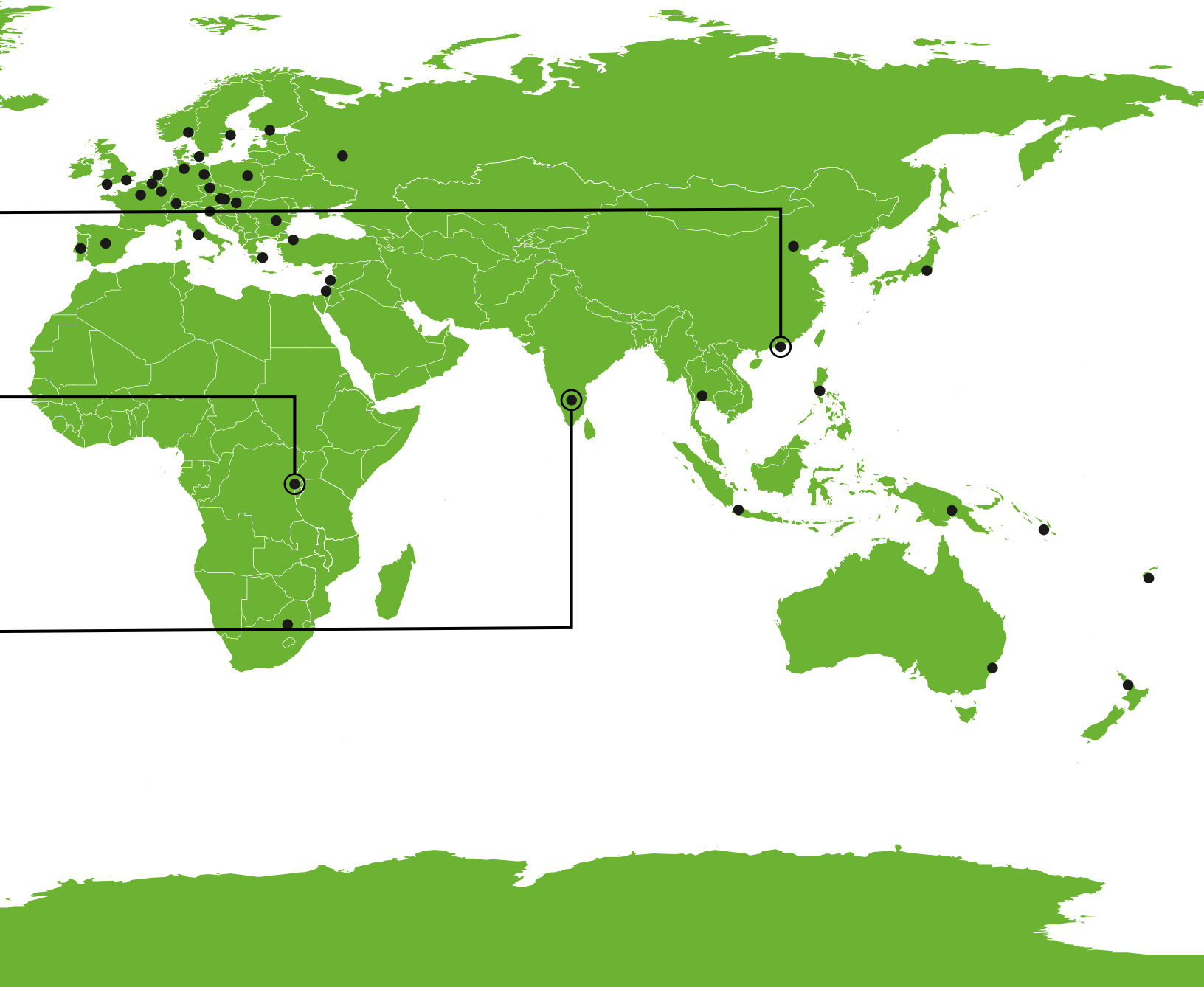
In 2009, as part of their campaign to raise global warming awareness, Greenpeace China launched an iPhone application that allowed people to access real-time air pollution data. The application has been so popular that it made the list of top 10 free downloads in Hong Kong.

## Greenpeace Congo

Greenpeace has identified the "Green Heart of Africa" as a key element in our campaign to achieve zero deforestation globally in the next decade. Members of Greenpeace's Congolese office have furthered this goal by creating opportunities for everyday citizens to speak directly to the government officials and logging companies whose decisions are impacting their daily lives.

## Greenpeace India

Greenpeace India's "Living Soils Campaign" is an effort to protect the country's soil from the harmful impacts of chemical fertilizers. Chemical fertilizers contaminate drinking water, pose a threat to human health, and contribute significantly to global warming pollution through their manufacture and use.



# GREENPEACE

greenpeace.org

## Washington, DC

702 H Street NW, Suite 300  
Washington DC 20001  
800.326.0959

## San Francisco, CA

75 Arkansas Street, Suite 1  
San Francisco, CA 94107  
415.255.9221

greenpeace.org  
greenpeacefund.org

**PRINTER:** CHROMA GRAPHICS USES WATER BASED PRESS COATINGS. ALL PRESS AND BINDERY SOLUTIONS ARE ALCOHOL FREE.

**PAPER:** THIS PAPER IS 100% POST-CONSUMER RECYCLED, WAS MADE USING BIOGAS ENERGY AND PROCESSED CHLORINE FREE.



100%

