

Moratorium & Progress Report on LOI Indonesia-Norway forest protection deal

Buying time to Protect our Forests?

GREENPEACE

www.greenpeace.org

Moratorium & Progress Report on Lol Indo-Norway forest protection deal



Key performance indicators not met:

- National REDD+ Agency
- Independent MRV system
- Institutional and financial mechanisms
- Degraded lands database

Moratorium & Progress Report on Lol Indo-Norway forest protection deal



Key performance indicators delayed/ partially met:

- ✓ Moratorium
- ✓ National REDD+ Strategy
- ✓ Pilot province (Central Kalimantan)
- ✓ Safeguards (under financing instrument)

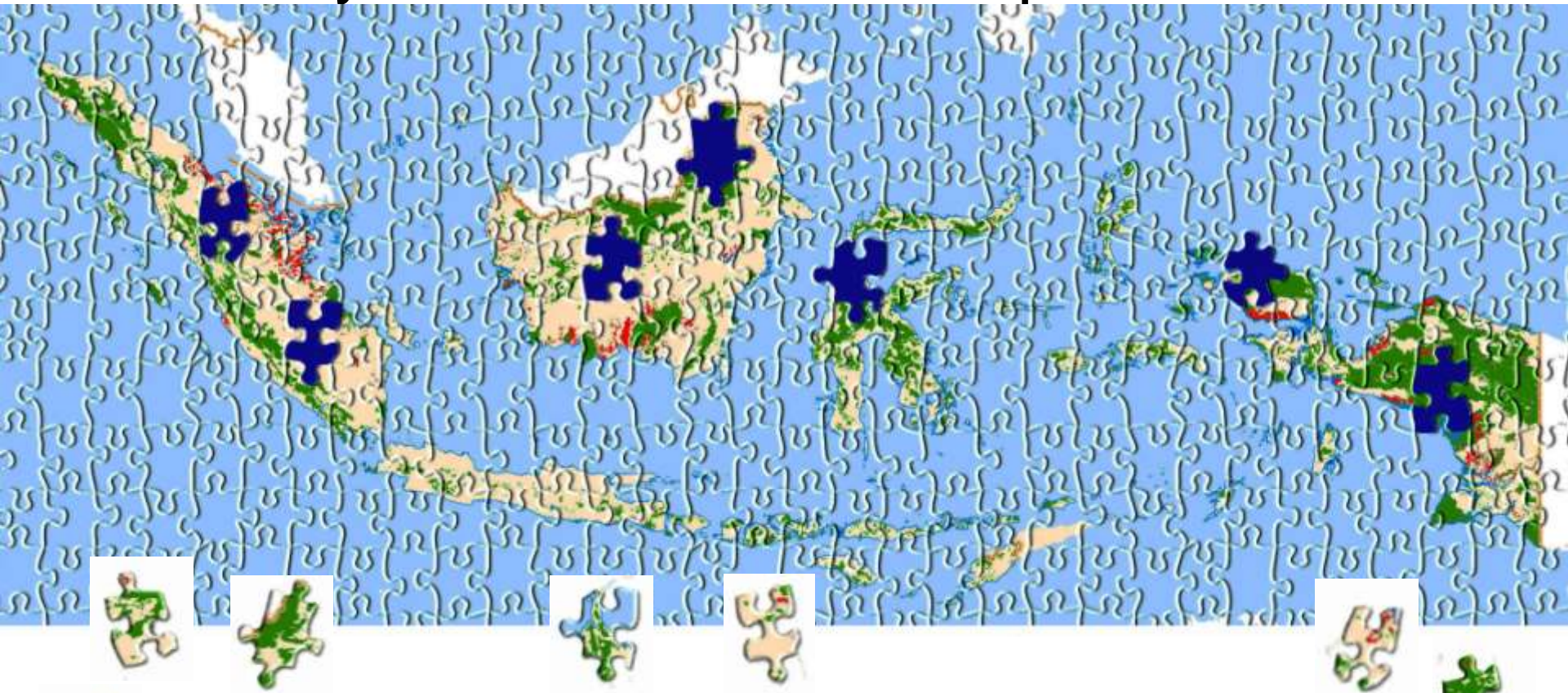
Moratorium & Progress Report on Lol Indo-Norway forest protection deal: Conclusions



Need to extend & strengthen the moratorium to ensure that:

- All key reforms are completed (forest governance, harmonization of laws/regulations), inc. review of existing concession permits
- Enforceable land cover/land use maps, to resolve indigenous land claims

Analysis of moratorium map revision 3



**What does the Moratorium map
Jigsaw Puzzle mean for Forests and Peat?**

GREENPEACE

www.greenpeace.org

An aerial photograph of a lush, green tropical forest. A dark, winding river or stream flows through the center of the forest, creating a meandering path. The trees are dense and vibrant green, with some variations in shade suggesting different species or canopy heights. The overall scene is a natural, undisturbed landscape.

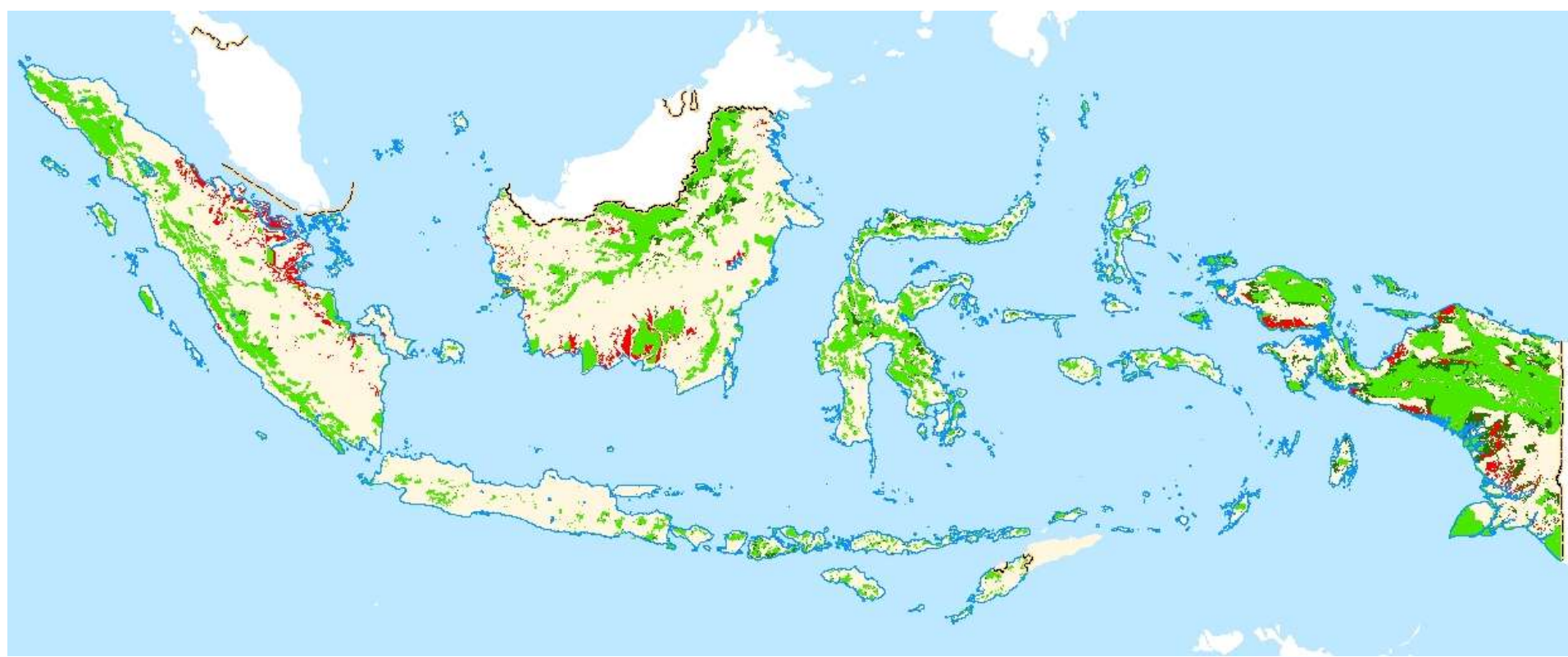
**MORATORIUM MAP REVISION 3 VS 2...
WHAT'S CHANGED?**

GREENPEACE

www.greenpeace.org

Indicative Moratorium Map (IMM) Revision 2

(SK 2771/Menhut-VII/IPSDH/2012)



AREAS OF IMM REVISION 2 (SK 2771/Menhut-VII/IPSDH/2012): 65,12 Million Hectare



Primary forest: 59,29 MHa (Primary forest: 8,22 MHa & Primary forest (HL/KSPA): 51,07 MHa)



Peat: 5,83 MHa

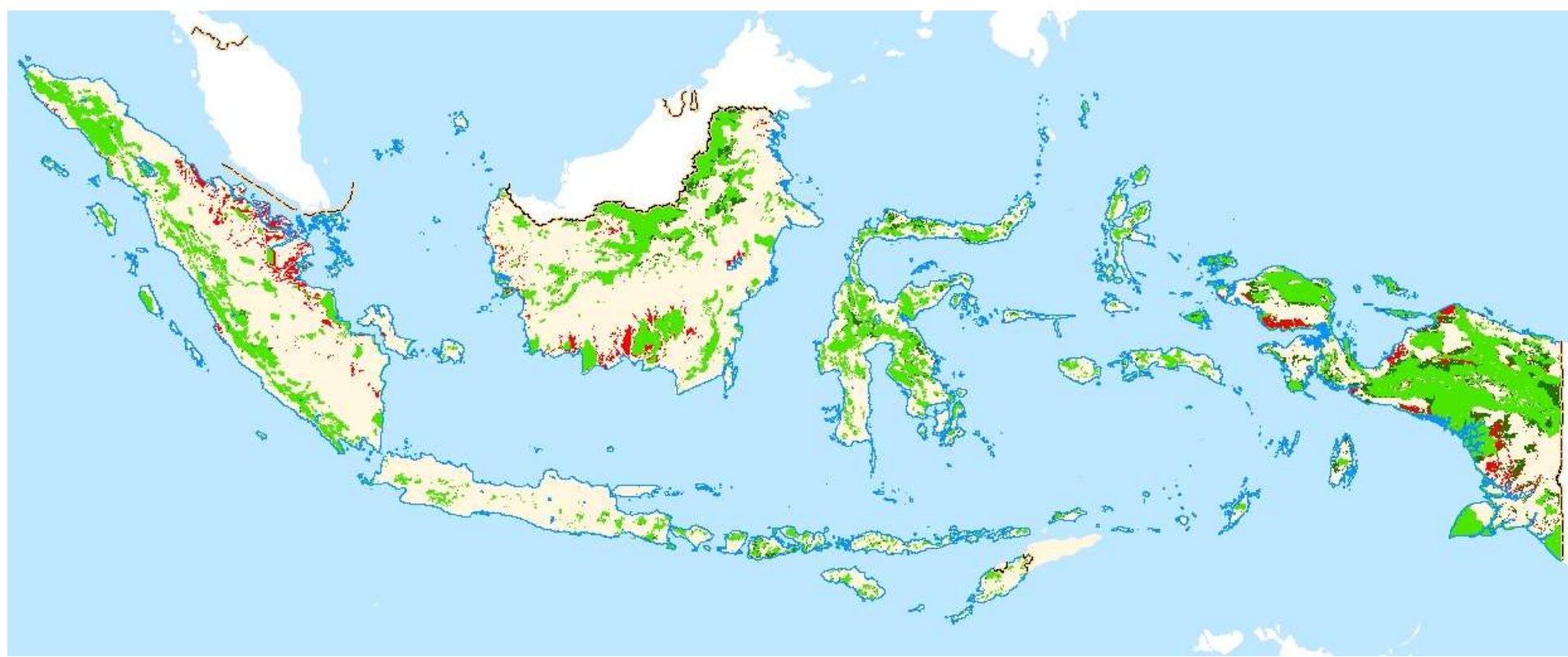
Source : Indicative Moratorium Map Revision 2, digital data downloaded from UKP4 website : http://ukp.go.id/informasi-publik/cat_view/20-geospasial
on May 28, 2012

GREENPEACE

www.greenpeace.org

Indicative Moratorium Map (IMM) Revision 3

(SK. 6315/Menhut-VII/IPSDH/2012)



AREAS OF IMM REVISION 3 (SK 6315/Menhut-VII/IPSDH/2012): 64,64 Million Hectare



Primary forest : 59,23 MHa (Primary forest : 7,72 MHa & Primary forest(HL/KSPA): 51,51 MHa)



Peat: 5,41 MHa

Source : Indicative Moratorium Map Revision 3, digital data downloaded from UKP4 website : http://ukp.go.id/informasi-publik/cat_view/20-geospasial
on November 28, 2012

GREENPEACE

www.greenpeace.org

Analysis of changes from IMM2 to IMM3



A Changes in Primary forests		B Changes in Primary forests as protected/protection forest(HL/KSPA)		C Changes in Peat	
	Hectare		Hectare		Hectare
Primary forest -----> Peat	3,653	Primary forest(HL/KSPA) -----> Peat	27,937	Peat -----> Primary forest	9
Primary forest -----> Primary forest(HL/KSPA)	782,669	Primary forest(HL/KSPA) -----> Primary forest	466,990	Peat -----> Primary forest(HL/KSPA)	99,520
Additional primary forest	63,499	Additional primary forest(HL/KSPA)	381,279	Additional peat	151,619
Primary forest omitted	241,549	Primary forest(HL/KSPA) omitted	333,144	Peat omitted	502,483
No changes still primary forest	7,190,592	No changes still primary forest(HL/KSPA)	50,244,369	No changes still peat	5,223,513

	Hectare
Moratorium areas omitted	1,077,176
Additional moratorium areas	596,397
Total areas ommited in IMM3	480,779

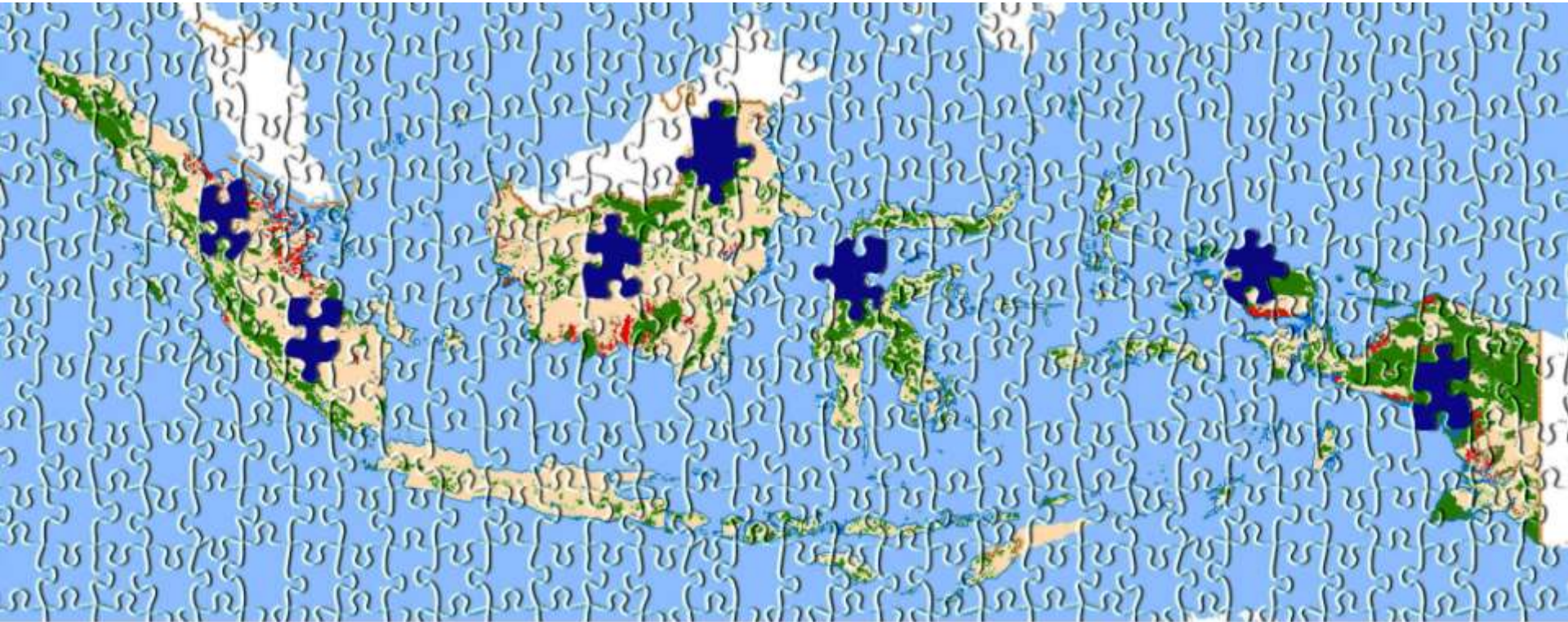
GREENPEACE

www.greenpeace.org

Analysis of changes from IMM2 to IMM3

- MoF map release shows reduction in moratorium area
- MOF map doesn't specify locations or the classification /status/function of areas where changes occurred
- Some changes in different status and function of areas → protected forest/conservation forest ← → Production forest/other purpose area
- Also changes in classification: Peatland ← → Primary forest

More missing pieces in the Jigsaw Puzzle



GREENPEACE

www.greenpeace.org

An aerial photograph showing a dense green forest on the left and a cleared, brownish area on the right. A road or path runs through the cleared area, and several dark lines, possibly power lines or roads, crisscross the landscape. The text is overlaid in the center of the image.

**DO MORATORIUM AREAS STILL OVERLAP WITH
CONCESSIONS IN IMM3?**

GREENPEACE

www.greenpeace.org

OVERLAP WITH 2010 LOGGING CONCESSIONS IN IMM 3



Logging concessions 2010 inside IMM 3: 2.62 Million Hectare

(in Primary forest: 886.856 Ha ; Primary forest(HL/KSPA): 1.460.448 Ha; Peat: 273.996 Ha)

Sources: Logging concessions map (IUPHHK-HA) 2010 issued by the Directorate General of Forestry Planning, Ministry of Forestry Republic of Indonesia, downloaded on July 30, 2010 from MoF website <http://appgis.dephut.go.id/appgis/kml.aspx>

GREENPEACE

www.greenpeace.org

OVERLAP WITH 2010 INDUSTRIAL FOREST CONCESSIONS IN IMM 3



Industrial forest concessions 2010 inside IMM 3: 589.922 Ha

(in Primary forest : 123.358 Ha; Primary forest (HL/KSPA): 391.522 Ha; Peat: 75.041 Ha)

Sources: Industrial forest concessions map (IUPHHK-HT) 2010 issued by the Directorate General of Forestry Planning, Ministry of Forestry Republic of Indonesia, downloaded on July 30, 2010 from MoF website <http://appgis.dephut.go.id/appgis/kml.aspx>

GREENPEACE

www.greenpeace.org

OVERLAP WITH 2010 PALM OIL CONCESSIONS IN IMM 3



Palm oil concessions 2010 inside IMM 3: 856.418 Ha

(in Primary forest: 85.289 Ha; Primary forest (HL/KSPA): 325.426 Ha; Peat: 445.704 Ha)

Sources:

1. HGU Map and Location Permit issued by the National Land Agency (BPN) in collected in 2007-2009
2. Palm oil concessions map 2010 issued by the Directorate General of Forestry Planning, Ministry of Forestry Republic of Indonesia, downloaded on July 30, 2010 from MoF website <http://appgis.dephut.go.id/appgis/kml.aspx>

OVERLAP WITH 2009 COAL CONCESSIONS IN IMM 3



Coal concessions 2009 inside IMM 3: 903.275 Ha

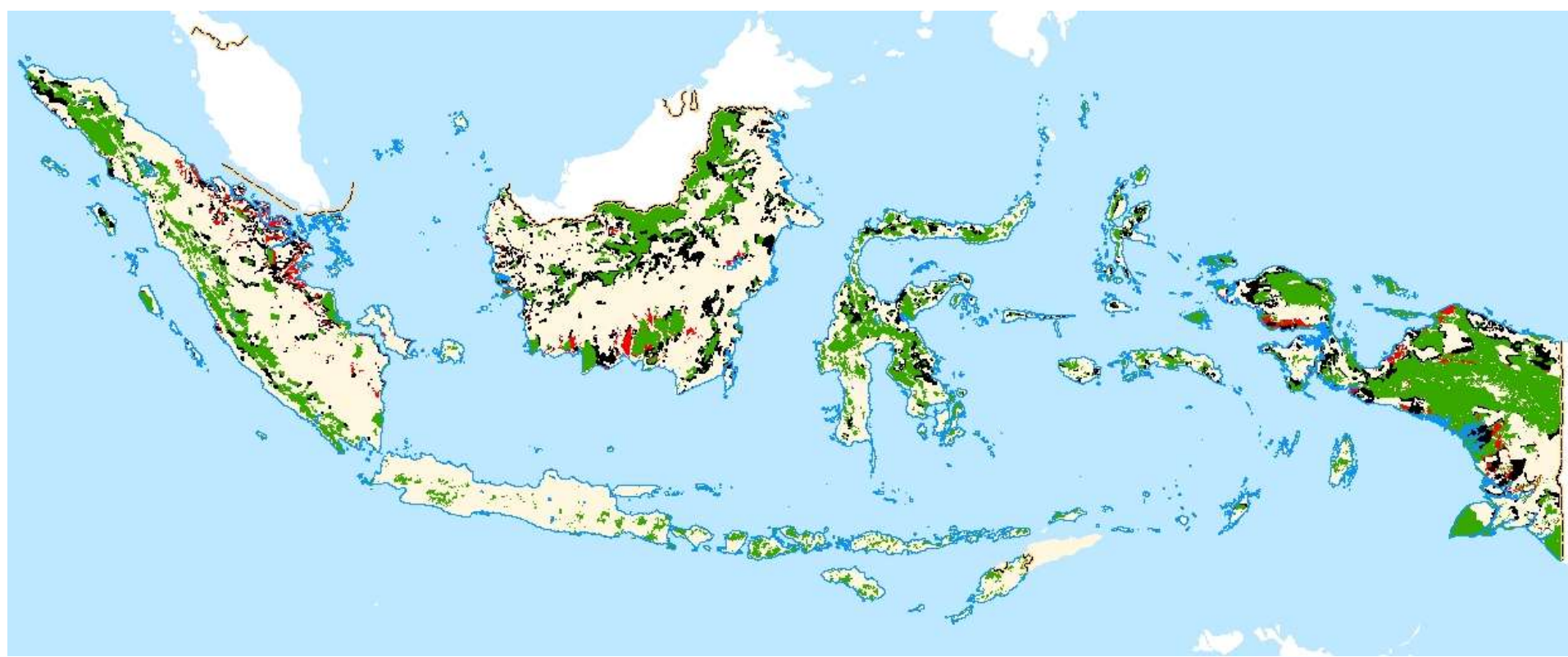
(in Primary forest: 87.360 Ha; Primary forest (HL/KSPA): 802.967 Ha; Peat: 12.948 Ha)

Sources: Map of Coal Mining concessions 2009 issued by the Indonesian Coal Mining Association in June 2009

GREENPEACE

www.greenpeace.org

SUMMARY OF OVERLAP WITH ALL 4 CONCESSION TYPES IN IMM3



 The 4th concessions inside IMM 3 : 4,97 Million Hectare

(Logging concessions: 2,62 MHa; Industrial forest: 0,59 MHa; Palm Oil: 0,86 MHa; Coal concessions: 0,90 MHa)

GREENPEACE

www.greenpeace.org

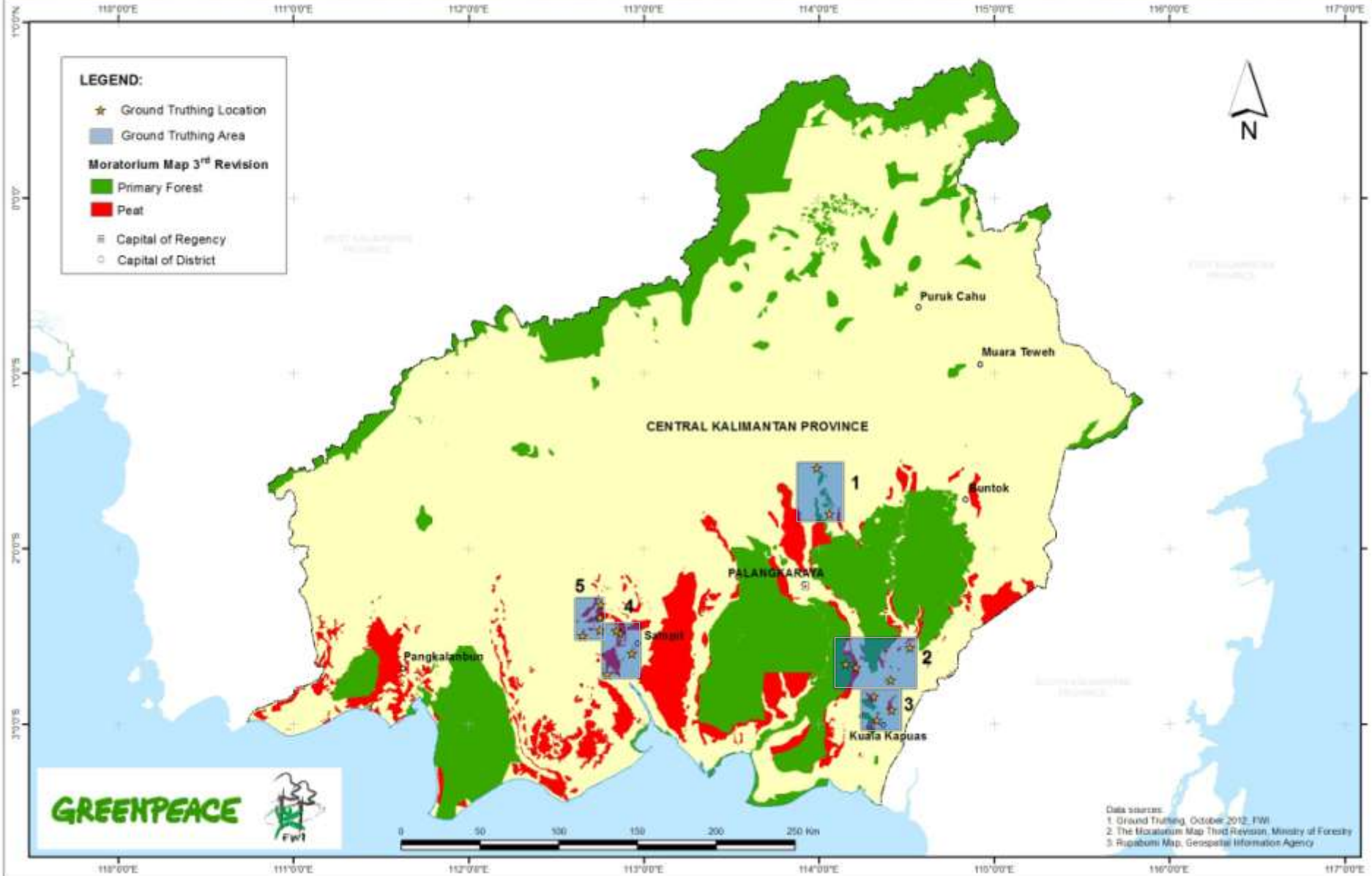
Concessions area inside IMM 3 (Million Hectare)

Concessions	IMM	IMM 1	IMM 2	IMM 3
Logging	2.61	2.56	2.57	2.62
Industrial fores	0.70	0.53	0.53	0.59
Palm Oil	2.18	0.90	0.89	0.86
Coal	1.02	0.93	0.92	0.90
Total	6.50	4.92	4.91	4.97

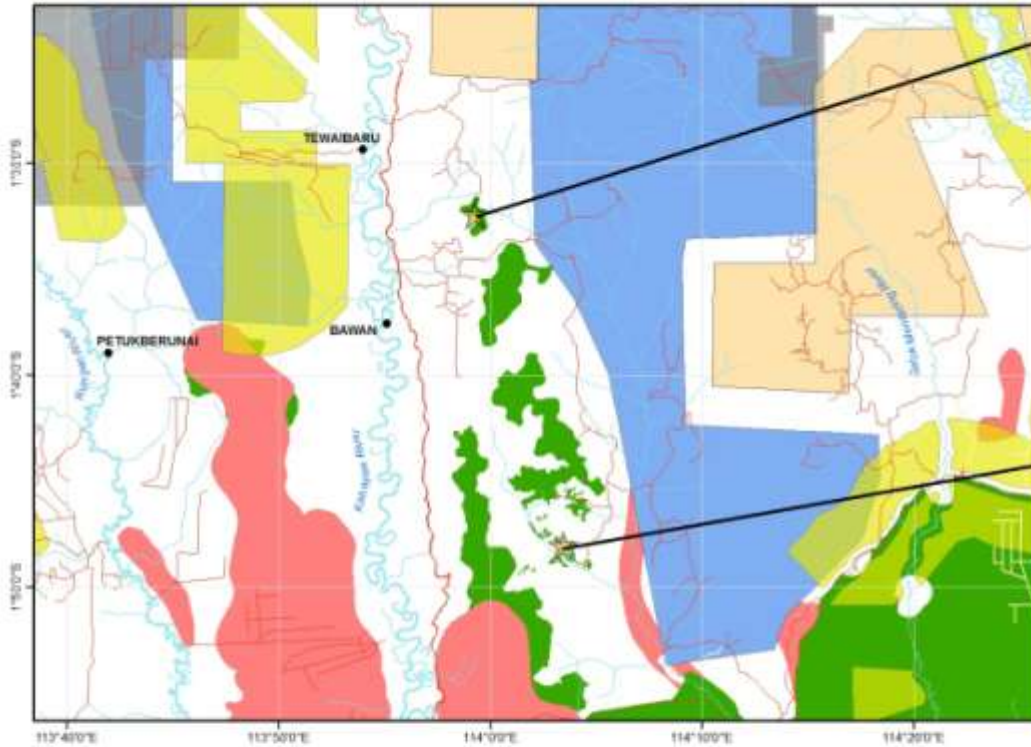
- Overlap of logging concessions ; Industrial Forest Plantation with Moratorium area is increasing
- Overlap of Palm Oil concessions; coal mines with Moratorium area is decreasing
- The harmonisation of sectoral maps and concessions data with moratorium map has still not been done
- URGENT REVIEW OF ALL EXISTING PERMITS NEEDED

**RESULT OF GROUND-TRUTHING
INSIDE IMM3 MORATORIUM AREA
IN CENTRAL KALIMANTAN PROVINCE**

MORATORIUM MAP'S GROUND TRUTHING LOCATIONS IN CENTRAL KALIMANTAN PROVINCE



**THE MORATORIUM MAPS 3rd REVISION'S GROUND TRUTHING RESULT
IN CENTRAL KALIMANTAN PROVINCE
OCTOBER 2012**



Coordinat location: 113°59'16.44"E, 1°32'24.00"S



Primary forest, considered conservation/protected area several years ago, while this location was in fact still part of forest concession (HPH) area. The average tree height is 50 m, density is high and the dominant species are meranti and keruing. On both sides of the old logging road, there are local community rubber plantations. In IMM Rev 3 this location is classified as Primary Forest.

Coordinat location: 114° 3'26.28"E, 1°48'2.52"S



This forest is located in the area of Sei kaliwang and has an average tree height of 40 m. It used to be forest concession area, for PT. Telawang and PT. Gempita (local community info). There are footpaths and an old logging road, as well as a lot of logging activity by the local community. In IMM Rev 3 this location is classified as Primary Forest.

LEGEND:

★ Ground Truthing Location

Moratorium Map 3rd Revision

Primary Forest

Peat

Palm Oil Concession

Forest Concession

Timber Estate

Coal Mining Concession

Main Road

Local Road

River

● Capital of Regency

● Capital of District



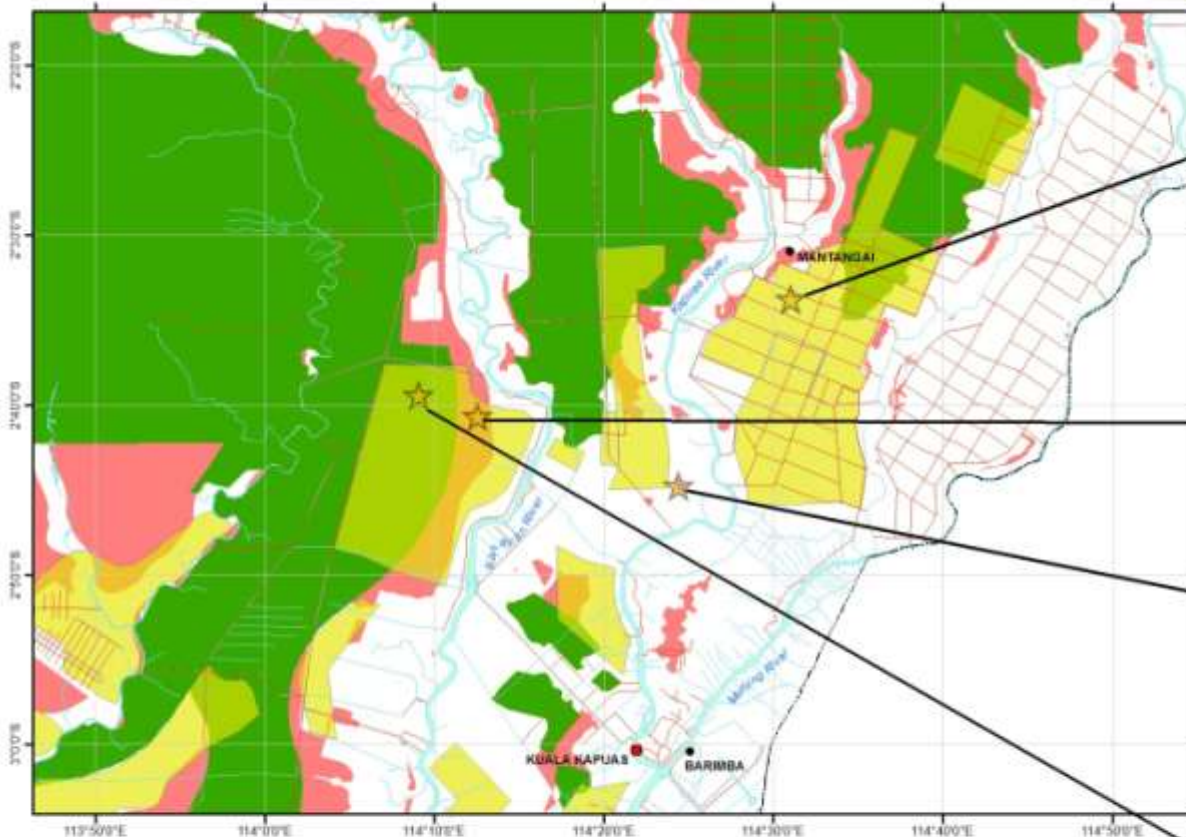
Source:
1. Ropabumi Map, Geospasial Information Agency
2. The Moratorium Map Third Revision, Ministry of Forestry
3. Peat Of Concession Map, Ministry of Forestry
4. Forest Concessions Map, Ministry of Forestry
5. Timber Estate, Ministry of Forestry
6. Coal Map Kalimantan & Sumatra, APB-ICMA
7. Ground Truthing, October 2012, FWI



GREENPEACE



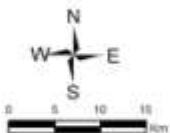
THE MORATORIUM MAPS 3rd REVISION'S GROUND TRUTHING RESULT IN CENTRAL KALIMANTAN PROVINCE OCTOBER 2012



LEGEND:

- ★ Ground Truthing Location
- Moratorium Map 3rd Revision
 - Primary Forest
 - Peat
 - Palm Oil Concession

- Main Road
- Local Road
- River
- Capital of Regency
- Capital of District



Inset



Source:
 1. Rupabumi Map, Geospatial Information Agency
 2. The Moratorium Map Third Revision, Ministry of Forestry
 3. Palm Oil Concession Map, Ministry of Forestry
 4. Ground Truthing, October 2012, FW

GREENPEACE



Location's coordinate : 114°31'3.72"E, 2°33'46.08"S



Palm oil plantation belonging to PT. Globalindo Agung Lestari. This location has been removed from IMM Rev 3.

Location's coordinate : 114°12'35.28"E, 2°40'39.38"S



Palm oil concession, PT. Sangkowong Sinta. In the northern section there is a rubber plantation owned by the local community. In the southern section a palm oil plantation is being developed. IMM Rev 3 classifies this area as Peat.

Location's coordinate : 114°24'27.00"E, 2°44'47.04"S



Land clearing at a palm oil concession, PT. Graha Inti Nugraha. IMM Rev 3 classifies this area as Peat.

Location's coordinate : 114°05'5.76"E, 2°39'26.64"S



Swamp in PT. Sangkowong Sinta's palm oil concession, annually cleared by fire. Shrub height is about 1 m. Dominant plants are Galam species (*Melaleuca cajuputi*) with an average height of 6 m. IMM Rev 3 classifies this area as Primary Forest.

THE MORATORIUM MAPS 3rd REVISION'S GROUND TRUTHING RESULT IN CENTRAL KALIMANTAN PROVINCE OCTOBER 2012



LEGEND:

★ Ground Truthing Location

Moratorium Map 3rd Revision

■ Primary Forest

■ Peat

■ Palm Oil Concession

— Main Road

— Local Road

— River

● Capital of Regency

● Capital of District

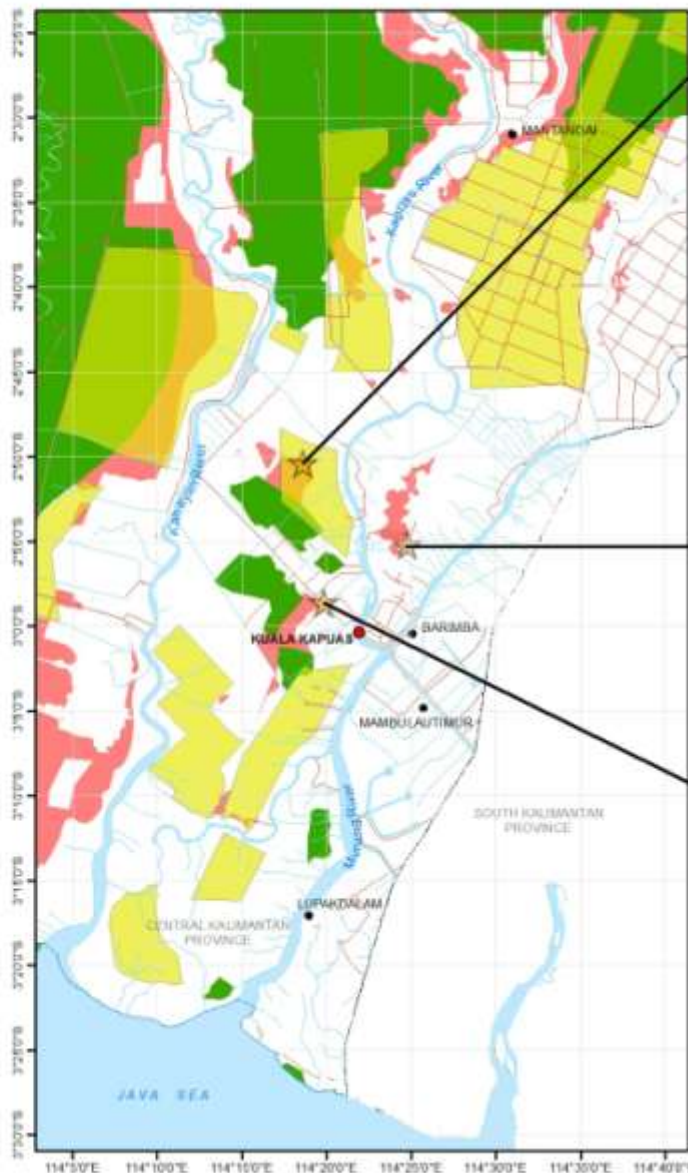
Source:

1. Rapabum Map, Geospatial Information Agency
2. The Moratorium Map Third Revision, Ministry of Forestry
3. Palm Oil Concession Map, Ministry of Forestry
4. Ground Truthing, October 2012, FWI

Inset



GREENPEACE



Location Coordinat : 114°18'38.52"E 2°50'24.00"S



Recently abandoned oil palms on a PT Fajar Mas Indah Plantations concession (5 months ago). The local community refuses the palm oil plantation in their village. This location is also part of the Peat area of IMM Rev 3.

Location Coordinat : 114°24'48.24"E 2°55'12.00"S



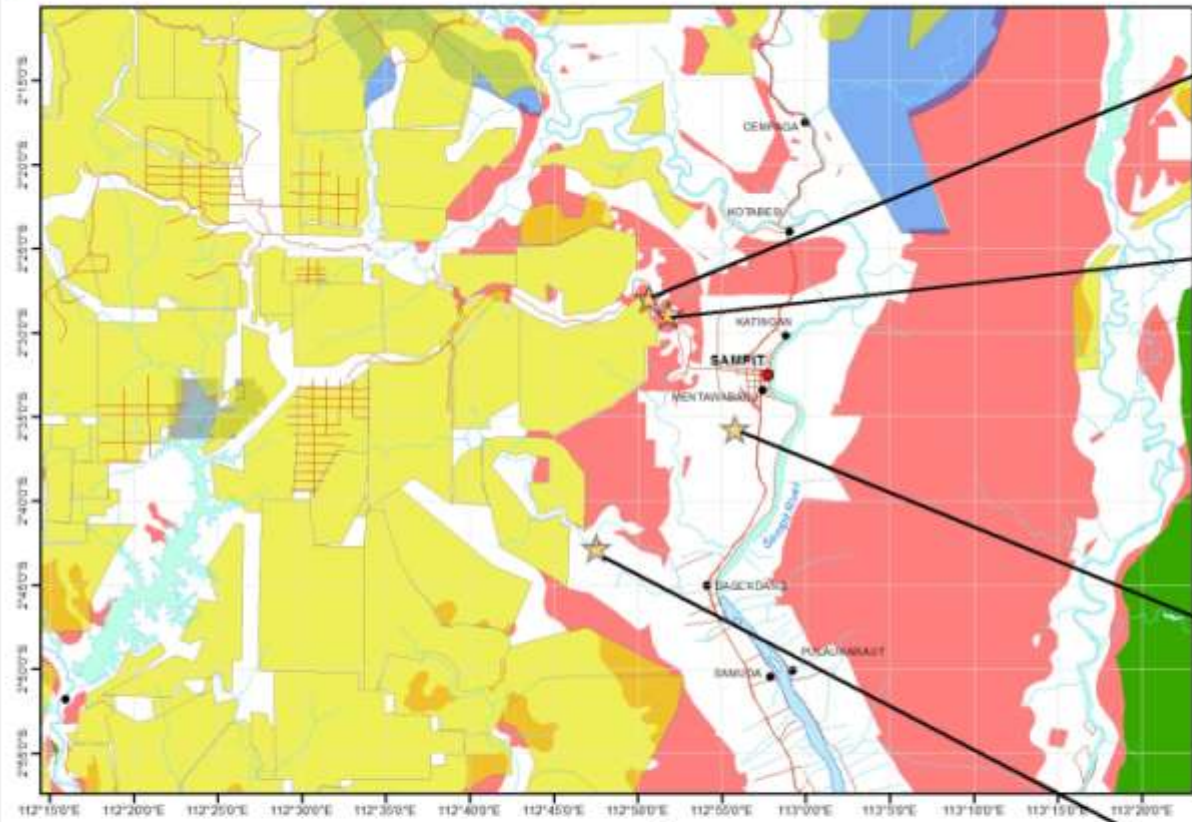
Almost the entire area in this location consists of rubber plantations owned by the local community, especially the area near the canals (approx. 6 km from the road). It has been removed from IMM Rev 3.

Location Coordinat : 114°19'51.24"E 2°58'35.40"S

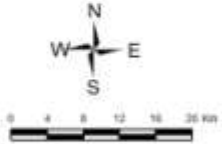


Various types of local community plantations: fruits, rubber and mixed plantations. This location has been removed from IMM Rev 3.

THE MORATORIUM MAPS 3rd REVISION'S GROUND TRUTHING RESULT IN CENTRAL KALIMANTAN PROVINCE OCTOBER 2012



- LEGEND:**
- ★ Ground Truthing Location
 - Main Road
 - Local Road
 - River
 - Capital of Regency
 - Capital of District
 - Primary Forest
 - Peat
 - Palm Oil Concession
 - Timber Estate Concession



Source:
 1. Rupabumi Map, Geospatial Information Agency
 2. The Moratorium Map Third Revision, Ministry of Forestry
 3. Palm Oil Concession Map, Ministry of Forestry
 4. Ground Truthing, October 2012, FWI



An area smaller than 1 ha, covered by bush and small trees, surrounded by burned areas. It is classified as Peat in the original IMM and has been removed from IMM Rev 2 and 3.



White sand mining, operational since 1990. This area is classified as Peat in the original IMM and has been removed from IMM Rev 2 and 3.

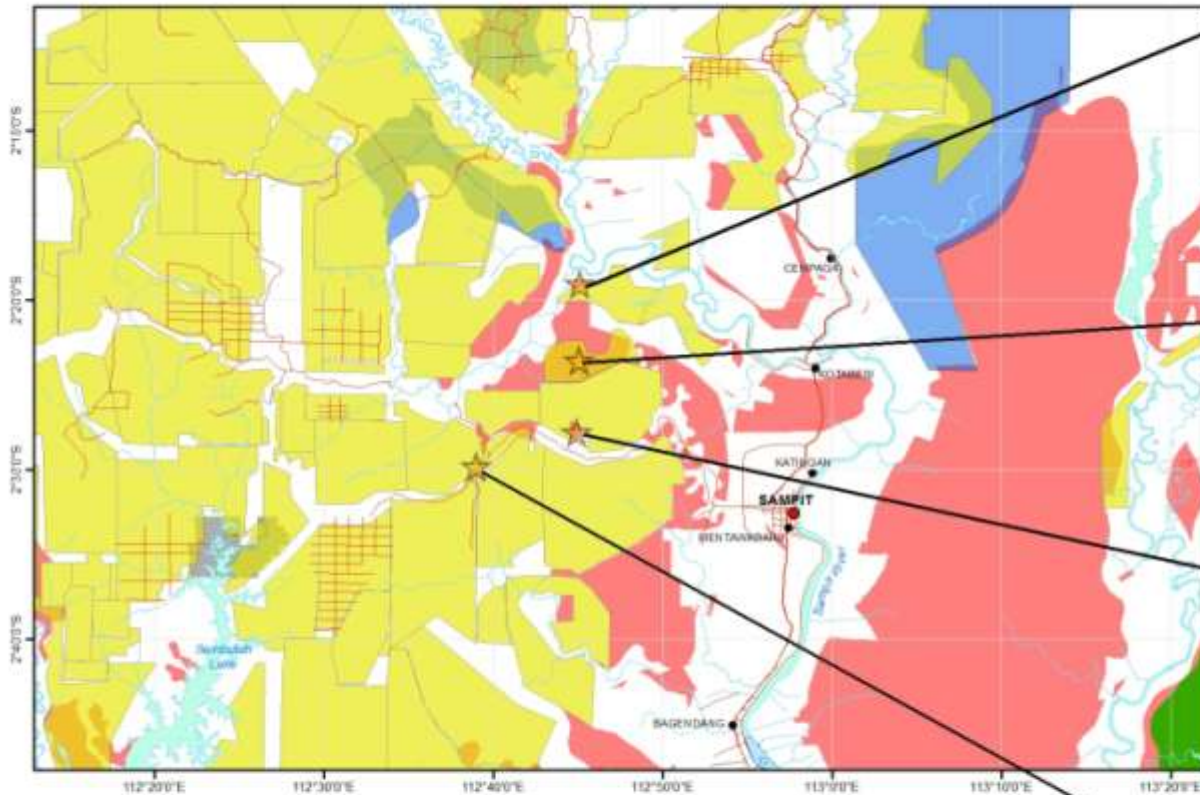


Land clearing by the local community for the establishment of palm oil plantations. This area is classified as Peat in the original IMM and has been removed from IMM rev 2 and 3.



Peat swamp forest with an average tree height of 20 m. Classified as Peat in IMM Rev 3.

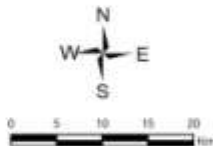
THE MORATORIUM MAPS 3rd REVISION'S GROUND TRUTHING RESULT IN CENTRAL KALIMANTAN PROVINCE OCTOBER 2012



LEGEND:

- ★ Ground Truthing Location
- Moratorium Map 3rd Revision**
- Primary Forest
- Peat
- Palm Oil Concession
- Timber Estate Concession
- Coal Mining Concession

- Main Road
- Local Road
- River
- Capital of Regency
- Capital of District



- Source:
1. Rupabumi Map, Geospasial Information Agency
 2. The Moratorium Map Third Revision, Ministry of Forestry
 3. Palm Oil Concession Map, Ministry of Forestry
 4. Coal Mining Concession, APBI-ICMA (2009)
 5. Ground Truthing, October 2012, FWI

GREENPEACE



Location's coordinate : 112°48'20"E, 2°48'59.78"S



Secondary forest with an average tree height of 15 m. Indications of human activity. This area has been set on fire, as the high amount of pioneer plants clearly shows. It is classified as Peat in IMM Rev 3.

Location's coordinate : 112°48'52"E, 2°23'32.64"S



Swamp in PT Laurus Mustika Jaya's palm oil concession, covered by galam trees with an average tree height of 10 m. This location classifies as Peat in IMM Rev 3.

Location's coordinate : 112°44'55.32"E, 2°27'47.88"S



Peat covered by high density heterogeneous forest. The average tree height is 15 m. Bush is dominant on the forest floor. Several sections show clear traces of fires. IMM Rev 3 classifies this location as Peat.

Location's coordinate : 112°44'55.32"E, 2°27'47.88"S



Small area of bush in a palm oil concession owned by PT. Lawang Haring Perkasa. An orang-utan's nest has been found in this area. IMM Rev 3 classifies this location as Peat.

Ground-Truthing Conclusions:

- Ground-truthing proves that overlaps between concessions and moratorium areas already identified in IMM2 are still in IMM3
- Classifications used in the IMMs do not accurately reflect the situation on the ground
- Some of the fragmented moratorium areas are under threat of deforestation
- Local communities are not well informed about which areas the Moratorium is supposed to protect



- **Much can be achieved if civil society orgs and Government work with local communities**
- **Local communities can help with monitoring of the Moratorium**

Tigers' Eyes Forest Patrol

SAVE FORESTS SAVE INDONESIA

Indonesia | English



Celebrate the beauty - Stop the destruction

A group of Indonesian civil society organisations joined forces to carry out the Tigers Eyes Tour in South, Central and West Kalimantan to celebrate the beauty of Kalimantan's forests and the rich culture it has inspired and, to document the destruction from pulp and paper and palm oil plantations, and coal mining, despite President Yudhoyono's 2011 moratorium on deforestation.

The Tigers Eyes Forest Patrol shows Indonesia's Government why and where the moratorium needs to be strengthened by covering existing forest concessions and all wastland, and is science-based rather than

ENTER



The following organisations participated in The Tigers Eyes Forest Patrol tour and contributed to this website:



<http://forestpatrol.greenpeace.or.id/>

Tigers' Eyes Forest Patrol

MATA HARIMAU FOREST PATROL

Fokus Pemantauan:
Kalimantan

Jumlah Pelaporan Masyarakat (4)
Kebakaran Hutan (1)
Konflik Lahan (1)
Penebangan Hutan (2)

Rute: Jalankan Animasi:
Kalimantan Tengah
Dayu - Palangkaraya
Palangkaraya - Pulang Pisau - Palangkaraya
Palangkaraya - Bangkal
Bangkal - Pangkalan Bun
Pangkalan Bun - Delang

Peta Tematik:
Primary forest
Kalimantan Tengah
Peat
Primary forest
Kalimantan Barat
Peat
Primary forest
Kalimantan Timur

Indonesia | English
Belende - Tentang Kami - Kontak Kami
© 2012 Greenpeace. All Rights Reserved

The map displays Kalimantan, Indonesia, with various regions labeled: Kalimantan Tengah, Kalimantan Barat, and Kalimantan Timur. It shows primary forest areas in green and peat areas in red. Patrol routes are marked with colored lines: orange for Kalimantan Tengah, purple for Kalimantan Barat, and cyan for Kalimantan Timur. Major cities like Kuching, Singuawang, and Palangkaraya are also visible. A scale bar at the bottom right indicates 0, 100, and 200 kilometers.

GREENPEACE

www.greenpeace.org

Tigers' Eyes Forest Patrol

Connecting...

M T HARIMAU FOREST PATROL

Fokus Pemantauan:

Kalimantan

Jumlah Pelaporan Masyarakat (4)

- Kebakaran Hutan (1)
- Konflik Lahan (1)
- Penebangan Hutan (2)

Rute:

Jalankan Animasi:

- Kalimantan Selatan
- Kalimantan Tengah
- Kalimantan Barat

Peta Tematik:

- Tutupan Hutan 2009
- Moratorium PIBIB 2
- Kelapa Sewit 2009
- HTI 2010
- HPH 2010
- Tambang Batu Bara 2011

Indonesia | English

Beranda | Tentang Kami | Kontak Kami

Waiting for forestpatrol.greenpeace.or.id...

Malaysia

Kebakaran Lahan Gambut

2012-04-02 08:57:00

Ribukabaran Hutan

Aktivis Greenpeace, WALHI, AMAN dan LSM lainnya mengaksikan lahan gambut yang terbakar pada Tur Kepak Sengap Enggang - Mata Harimau. Tur ini bertujuan untuk menyalakan secara langsung kondisi terdampar hutan alam Kalimantan, sebuah habitat burung Endemik yang sedang menahkodasi

0 100 200 Kilometers

GREENPEACE

www.greenpeace.org

Tigers' Eyes Forest Patrol

Mata Harimau Forest Patrol | Se... +

MATA HARIMAU FOREST PATROL

Fokus Pemantauan:

Kalimantan

Jumlah Pelaporan Masyarakat (4)

- Kebakaran Hutan (1)
- Konflik Lahan (1)
- Perambahan Hutan (2)

Rute: Jalankan Animasi: [play]

- Kalimantan Selatan
- Kalimantan Tengah
- Kalimantan Barat

Peta Tematik

- Moratorium PIBIB 2
- Kelapa Sawit 2009
- Kalimantan Selatan
- Kalimantan Tengah
- Kalimantan Barat
- Kalimantan Timur

Indonesia | English

Beranda | Tentang Kami | Kontak Kami

© 2012 Greenpeace. All Rights Reserved

GREENPEACE

www.greenpeace.org

Tigers' Eyes Forest Patrol

Mata Harimau Forest Patrol | Se... +



© 2012 GREENPEACE / LIET #FANSATI

Tanggal : 2012-09-22

Lokasi : Sembuluh, Kabupaten Kotawaringin Timur

Lintang : 2.547686 °LS

Bujur : 112.511406 °BT

Deskripsi :

Aktivis Greenpeace, Walhi, AMAN dan LSM lainnya, memakai kostum Harimau berkendara dengan sepeda motor menyaksikan secara langsung Perkebunan Sawit PT. WILMAR di Sembuluh, Kabupaten Kotawaringin Timur pada Tur Kepak Sayap Enggang - Mata

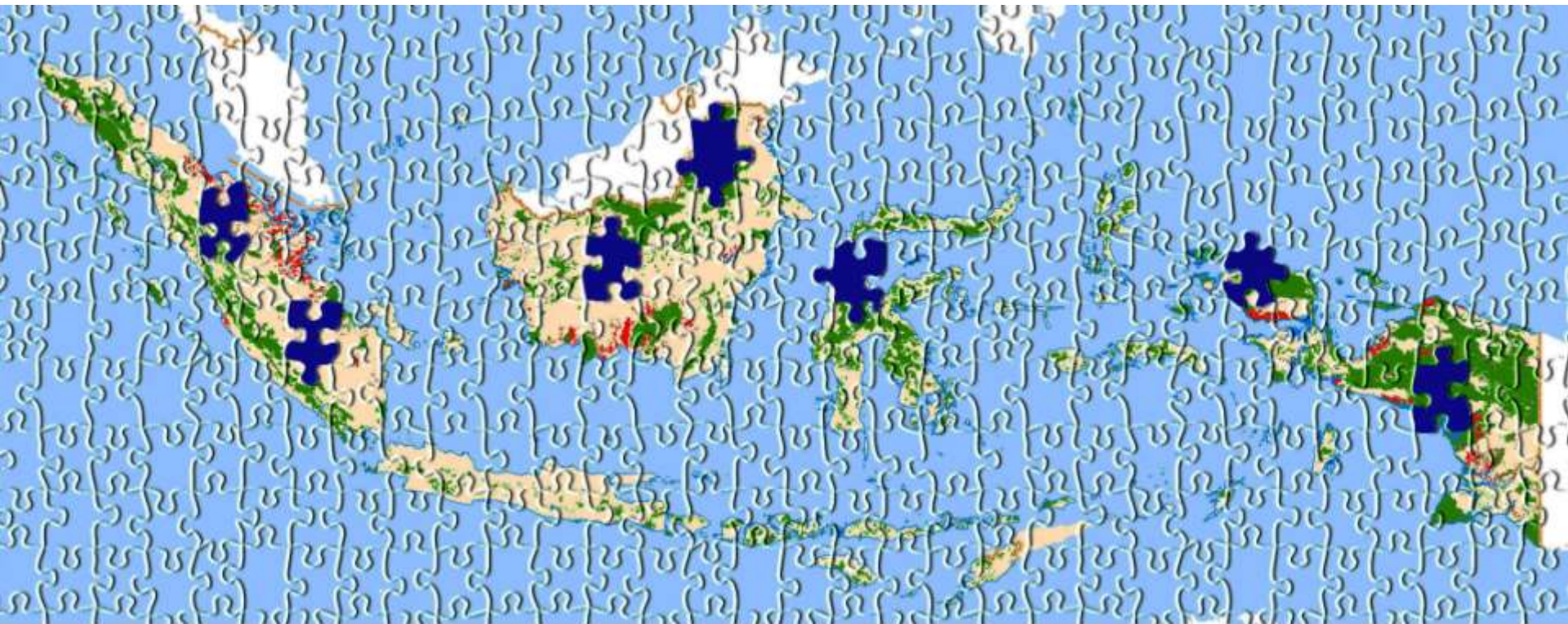


Bangkal - Pangkalan Bun

Bermalam di Desa Bangkal di pinggiran Danau Sembuluh satu cerita mengkhawatirkan lagi yang diperoleh tim dari masyarakat setempat. Danau seluas 8.000 hektar yang merupakan danau air tawar yang populasi ikannya terbesar di Kalimantan Tengah dari harapan satu-satunya bagi sedikitnya 7 desa yang ada di sekitar danau untuk bertahan.

GREENPEACE

www.greenpeace.org



GREENPEACE

www.greenpeace.org

URGENT ACTION NEEDED:

- Moratorium based on performance (not limited by time) including strengthening moratorium by reviewing all existing permits;
- Complete gazetting of Forest areas;
- Include all Peatlands and Forest in the Moratorium

TERIMAKASIH

Selamatkan
Hutan **Selamatkan**
Indonesia



Indonesia

Hutan **Selamatkan**

Selamatkan

GREENPEACE

www.greenpeace.org