

## BANGALORE AIR QUALITY MONITORING SURVEY

### Test Results:

Greenpeace India monitored air quality in four different locations across Bangalore and the test results revealed high levels of Particulate Matter pollution – PM10 in all four locations. The air quality monitoring survey was conducted at four prominent junctions - Hosur Road, Peenya, Nrupathunga Road and KR Puram. The results revealed that the pollution levels peaked at more than 10 times the Indian safety standards and 25 times the safety standards set by the World Health Organisation.

*Table showcasing the maximum and the average recorded PM10 Values for four different locations in Bangalore*

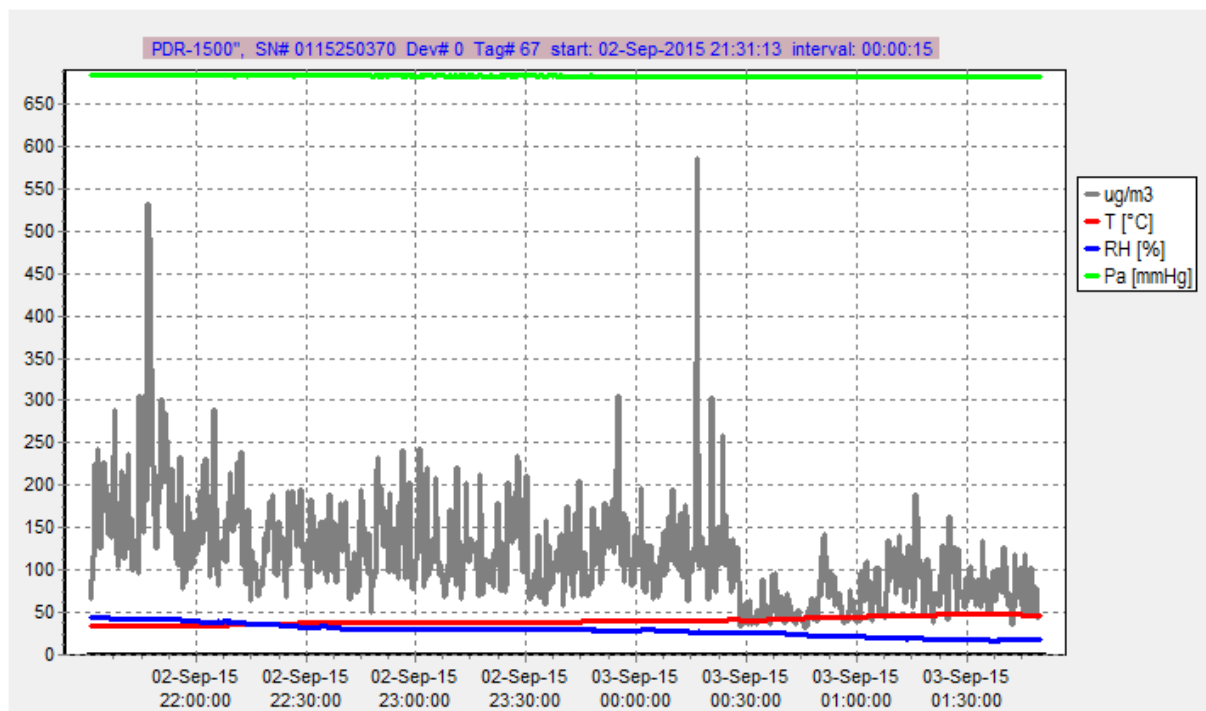
LOCATION	DURATION	MAX Pollution Recorded(PM10 Values in ug/m3)	EXCEEDED the INDIAN Safety Limits <sup>i</sup> by	EXCEEDED the WHO <sup>ii</sup> Safety Limits by	AVERAGE <sup>iii</sup> Pollution Recorded(PM10 Values)
CHRIST COLLEGE, Hosur Road	8Hrs	730	7 times	14 times	136
PEENYA Junction	8Hrs	1297	13 times	26 times	252
RESERVE BANK OF INDIA, Nrupathunga Road	8Hrs	1032	10 times	20 times	95.5
KR Puram Junction, White Field Road	8Hrs	637	6 times	12 times	97

Methodology –

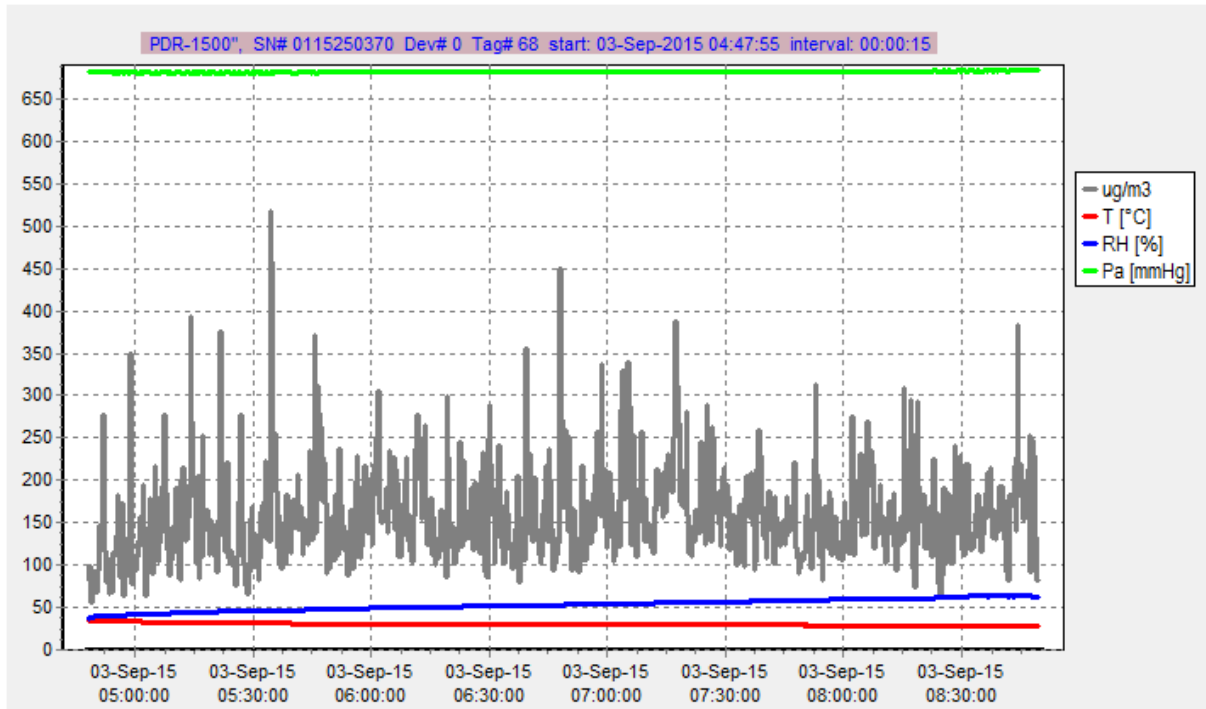
8 hour averages for PM 10 values with measurement units – micrograms per cubic meter were derived at four key locations across Bangalore city. The locations were also inclusive of prominent educational and govt institutions such as Christ University on Hosur Road and The Reserve Bank of India on Nrupathunga Road. The monitoring process was aimed at understanding the peak hour exposure levels in the city and was done in two batches each. The first batch of the monitoring focused on measuring air quality from 9:00am to 1:00pm and the second batch took stock of the pollution levels in the second half of the day, between 2:30pm to 7:00pm on different days for different locations. The monitoring process was discontinued at Peenya in the second half within one and half hours due to the heavy down pour and the same is reflected in the graphs below.

### GRAPHICAL REPRESENTATION OF PM10 VALUES IN BANGALORE CITY:

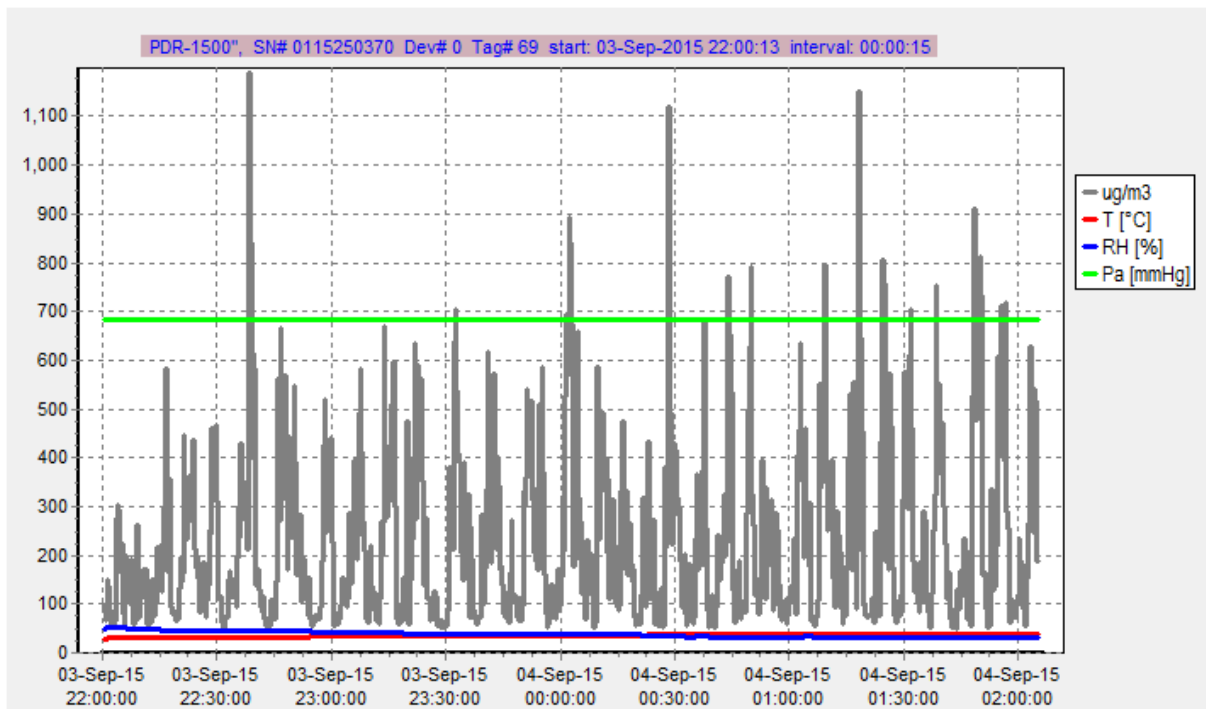
CHRIST COLLEGE – First Half (4 Hrs)



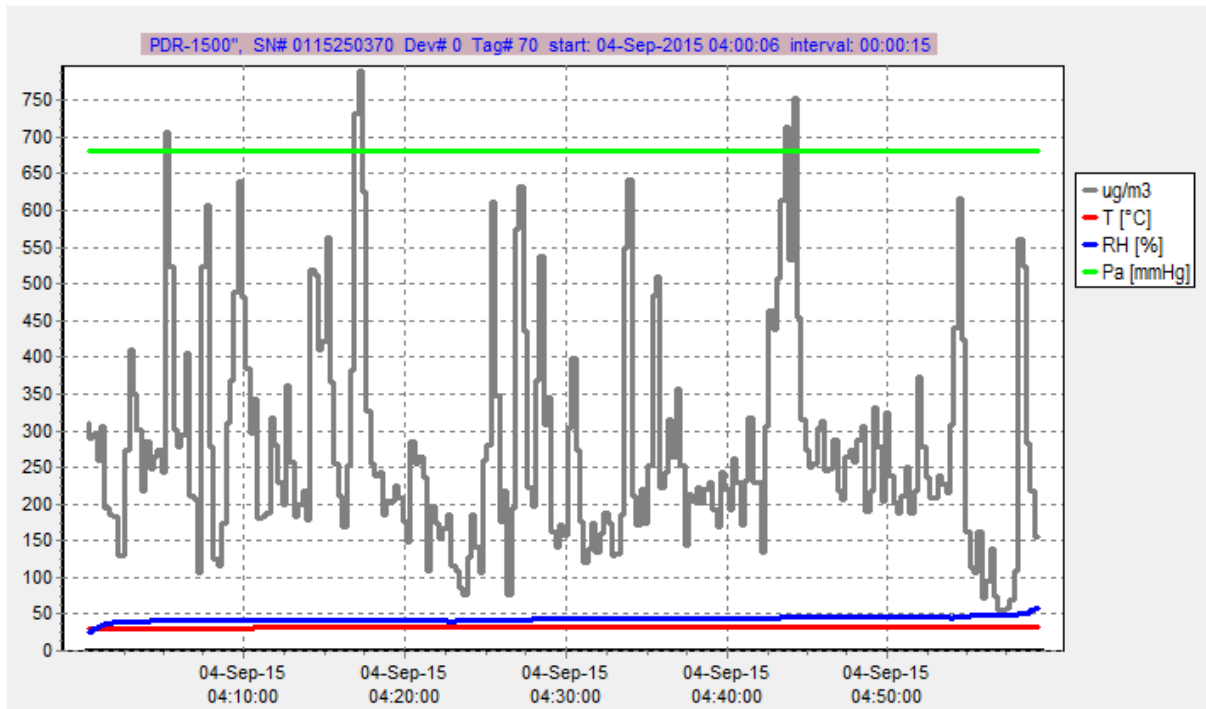
CHRIST COLLEGE – Second Half(4 hrs)



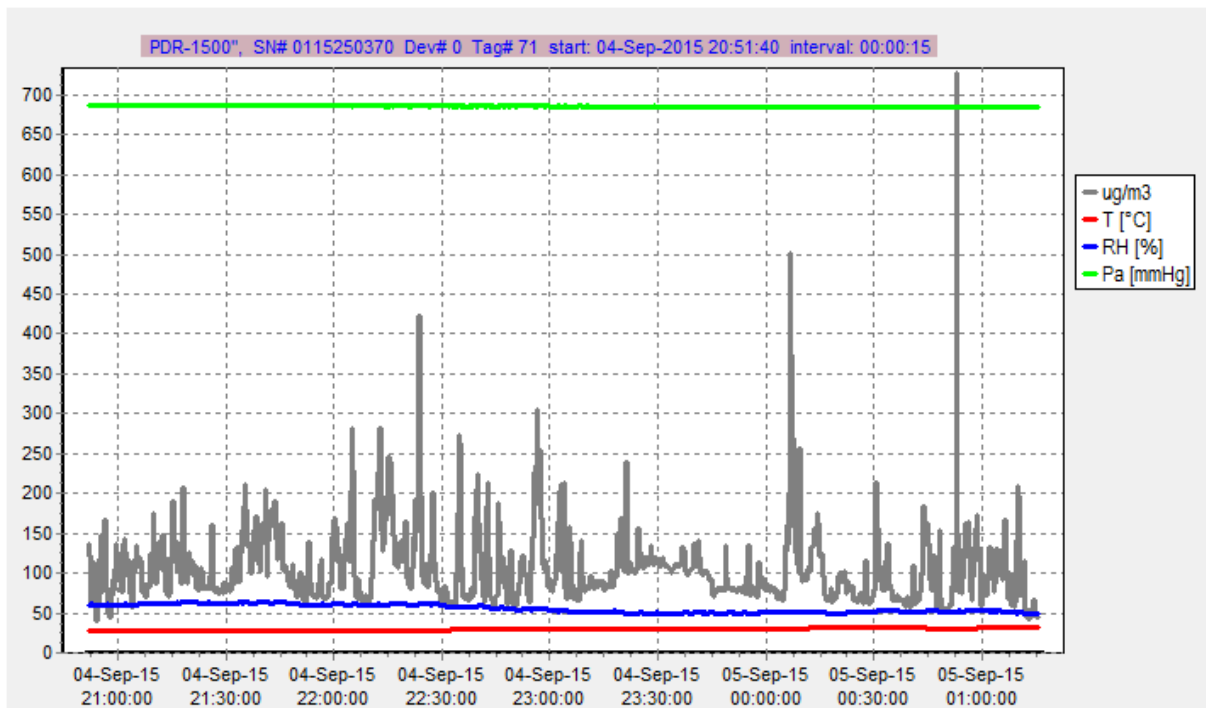
PEENYA – First Half (4hrs)



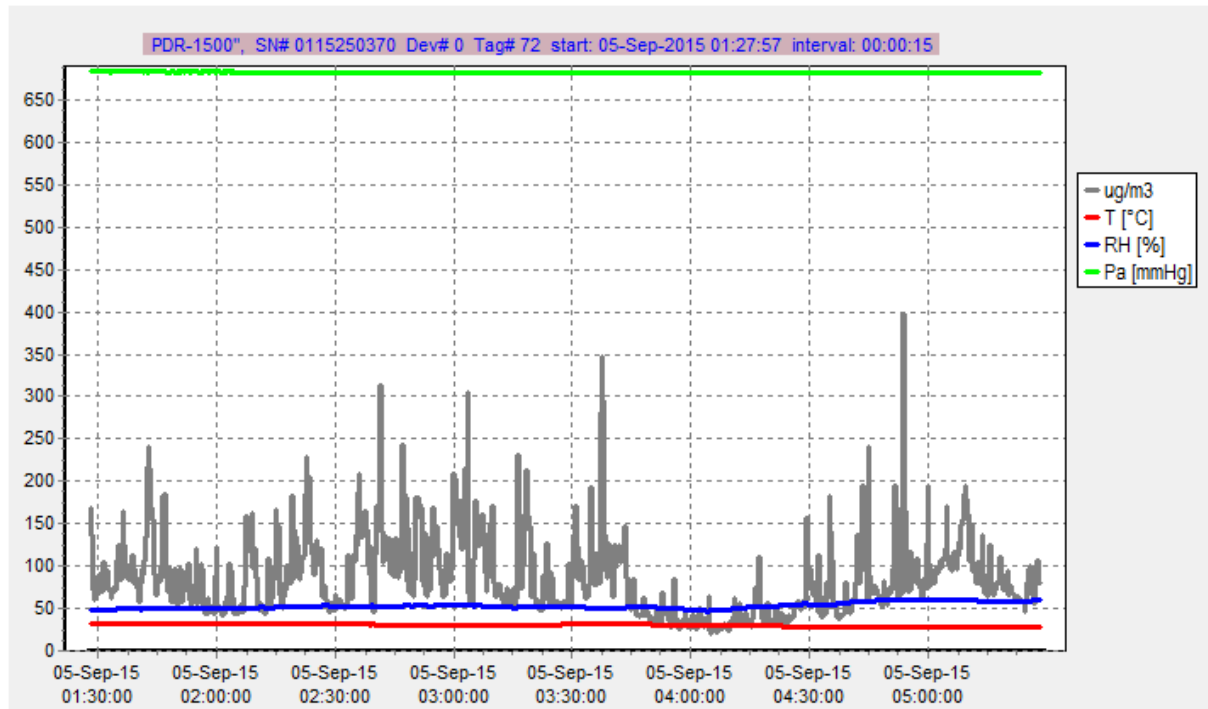
PEENYA – Second Half(Discontinued after one and half hour due to rain)



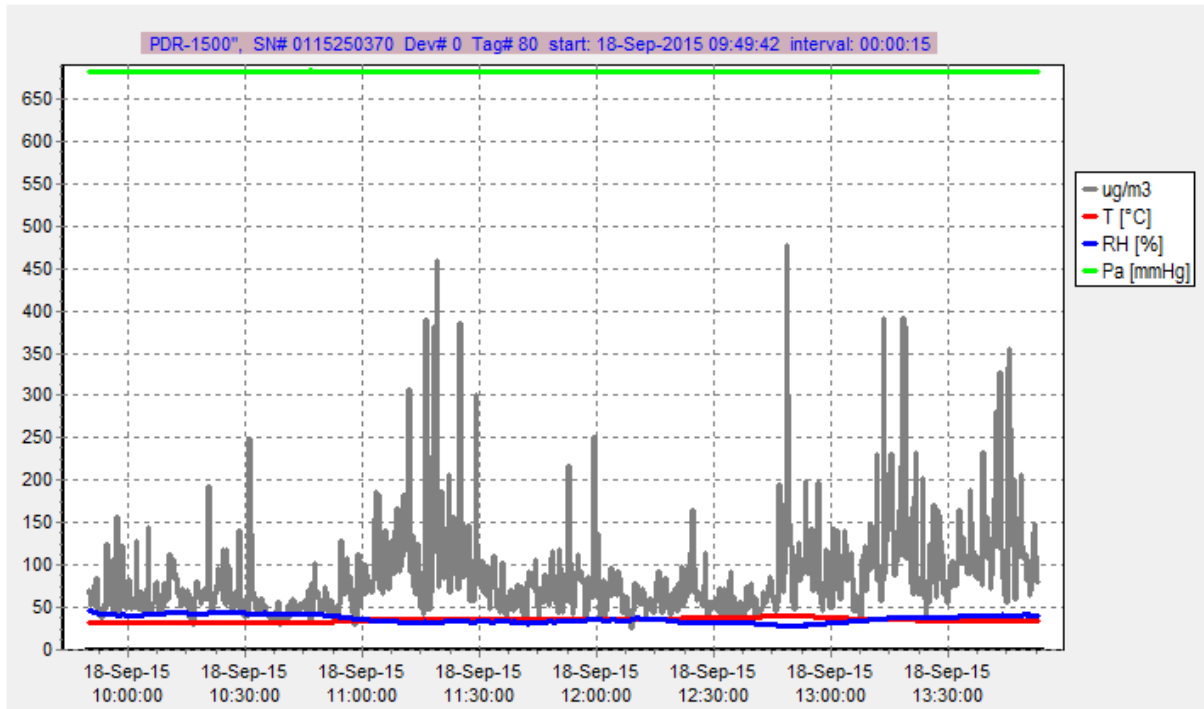
RBI – First Half (4hrs)



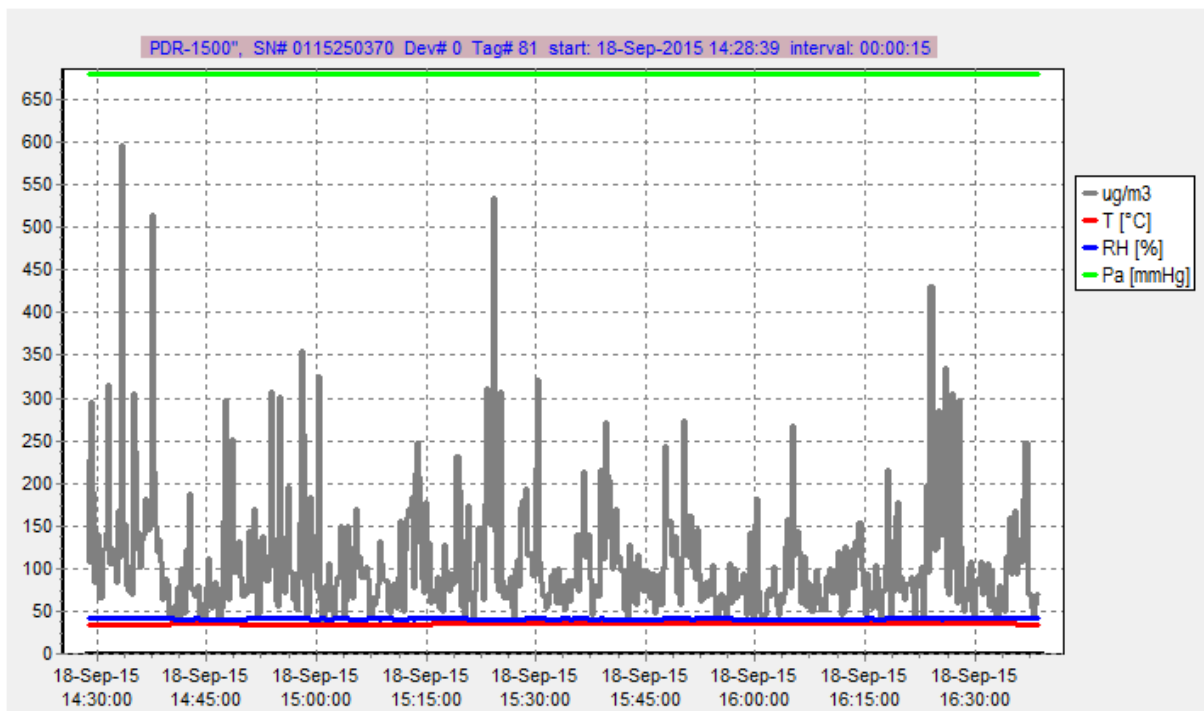
RBI – Second Half (4hrs)



KR Puram – First Half(4hrs)



KR Puram Second Half (4hrs)



<sup>i</sup> [http://cpcb.nic.in/National\\_Ambient\\_Air\\_Quality\\_Standards.php](http://cpcb.nic.in/National_Ambient_Air_Quality_Standards.php)

<sup>ii</sup> Page 13 Table 2 [http://apps.who.int/iris/bitstream/10665/69477/1/WHO\\_SDE\\_PHE\\_OEH\\_06.02\\_eng.pdf](http://apps.who.int/iris/bitstream/10665/69477/1/WHO_SDE_PHE_OEH_06.02_eng.pdf)

<sup>iii</sup> The averages were derived by summing the first and the second batch of monitoring conducted for that particular location on the day of monitoring